



## REDUCE CRITICAL SITUATIONS ELECTRONICALLY

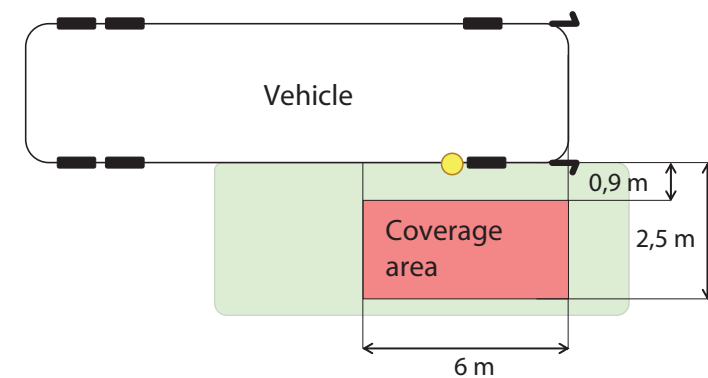
TurnCAM® meets all the technical requirements that have been formulated by the Federal Ministry of Transport at turn-table assistance systems. This includes z. B. a well-defined coverage area: This includes a rectangle from 0.9 to 2.5 meters away from the side of the vehicle.

The ROSHO turn-off assistant completed the time-consuming test procedure at DEKRA and thus received the certificate for the issuing of a general operating permit (ABE). It complies fully with the instructions and guidelines issued by the Federal Minister of Transport.

This makes the TurnCAM® turn-off assistant one of the first officially approved and eligible systems on European roads.

### Coverage area required by the Federal Ministry of Transport and Digital Infrastructure

(19. Sept. 2018 StV 22/7342-13/10)



## Solution for buses, trucks and special vehicles

The ROSHO TurnCAM® consists of a few, powerful components. This includes the detection box, which has a side camera detection feature. The special wide-angle camera registers every moving object that is in the danger zone. They are activated automatically. The switching on and off of the additional acoustic warning function takes place u. a. through the blinker or other GPIO signals. Optionally, the extension to the speed signal or the connection to an analog steering angle sensor is possible.

### Robust tools for lasting performance

Various monitors can be connected to the TurnCAM® Box; For example, the LCM 703T 7" monitor in an elegant, ultra-slim and rugged design housing for buses and trucks, or the 10.4" LCM 1006 metal monitor for connecting up to two cameras or video sources. Installation at the driver's workplace or at the bow flap above the driver. The powerful wide-angle camera SK 1708M with its viewing angle of 180° detects every possible danger in the area of the detection area. It is extremely robust, especially dust, dirt, rain and frost resistant. It is delivered together with an adapter that antireflects the camera image so that the driver has a better overview of the lateral situation on the vehicle. Camera cables are available in different lengths and with different plugs. Accurate installation instructions are enclosed with the system; If desired, our ROSHO installation team installs the system directly in your vehicles.

**ROSHO**  
Automotive Solutions

ROSHO GmbH - Rose & Holiet  
Rotrehre 21  
31542 Bad Nenndorf  
[www.roscho.de](http://www.roscho.de)

We advise you!  
T: +49 (0)5723 94 17 0  
F: +49 (0)5723 94 17 50  
M: [info@roscho.de](mailto:info@roscho.de)

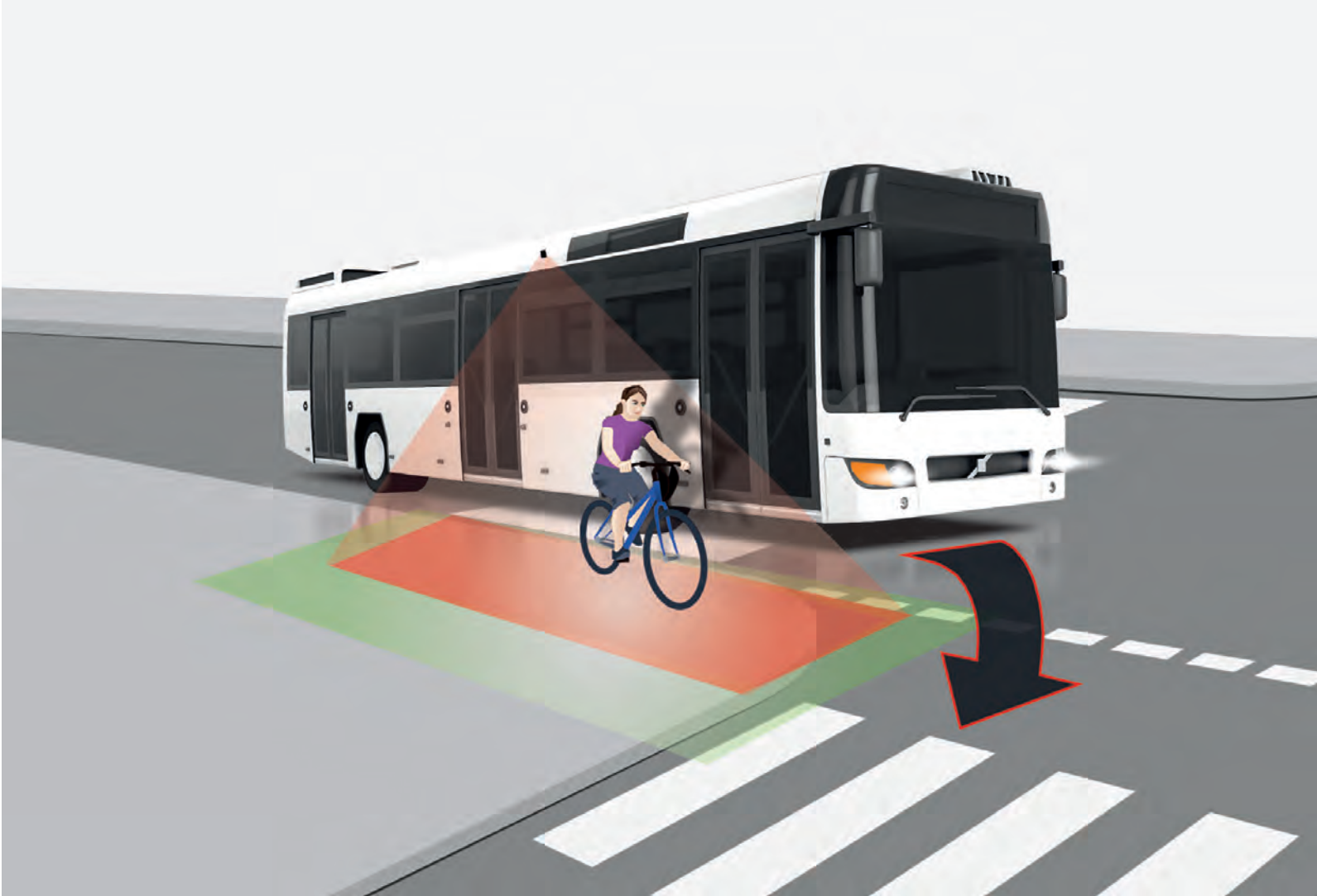


## EASILY SWITCH THE DEAD ANGLE ON



**ROSHO**  
Automotive Solutions





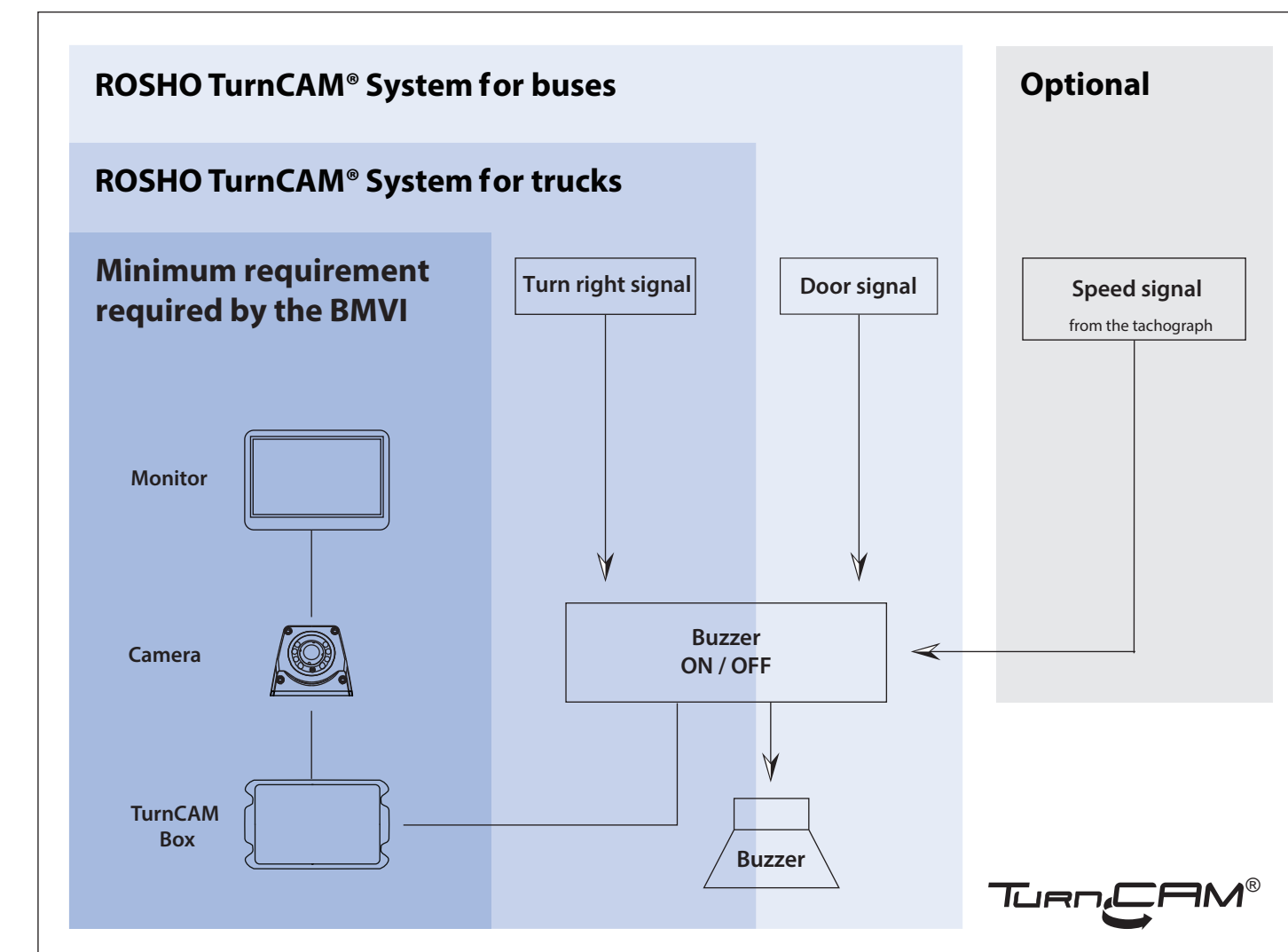
## The TurnCAM® recognizes endangered cyclists and pedestrians in the blind spot

- Significant improvement in traffic safety on the road through additional safety when turning
- Monitoring of the right lateral vicinity by special developed wide-angle camera
- Autonomously detects critical traffic situations intelligent image analysis
- When a person or an object is detected, an optical and optionally additional acoustic warning signal is sent to the driver
- The turn assistant consists of a few powerful components
- The system is specially adapted to the requirements in trucks and buses

The TurnCAM® meets all the technical requirements that have been formulated by the Federal Ministry of Transport for turnaround assistance systems.

**THE TAKE-OFF ASSISTANT IS PROMOTED BY THE BMVI!  
APPROVED BY THE KBA**

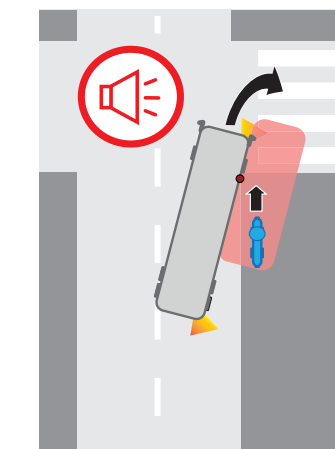
## TurnCAM® systems



## Turn off assistant functions

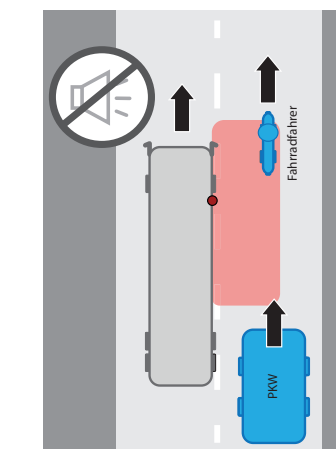
### Signal turn right

- Acoustic signal active
- Optical signal active



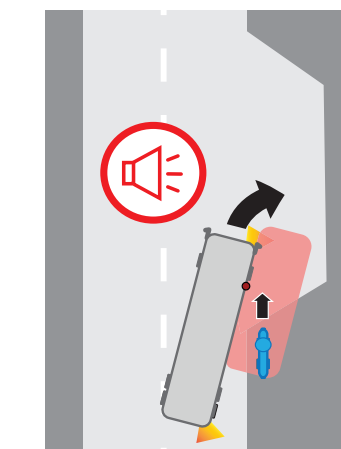
### Straight ahead

- Acoustic signal inactive
- Optical signal active



### Approach to bus stop with turn signal

- Acoustic signal active
- Optical signal active



### Bus stop without hazard warning lights

- Acoustic signal inactive
- Optical signal active

