

ROOFTOP-MOUNTABLE UNITS

REDEFINING AN ENTIRE INDUSTRY



COMPACT VERSATILITY FOR
HIGHLY-EFFICIENT, ALL-ELECTRIC PERFORMANCE

Rooftop Mountable Units *Bora EL10*

Uniquely designed to deliver air-conditioning to a driver in constant capacity, full-electric functionality, and after an easy installation, this Unit is compatible with the *Aranea* control system and comes prefilled with refrigerant, requiring no refrigerant pipes leading to the vehicle’s engine — completely standalone when the topic is refrigerant. Most ideal for implementation in roof-mounted applications.

Performance	
Maximum Cooling Capacity	3 kW
Nominal Cooling Capacity	2.6 kW
Heating Capacity	-
Airflow AC	800 m³ / h
Fresh air AC	0% — 100%
Maximum Current Draw	40 A
Dimensions	1256 x 756 x 215
Weight	42 kg



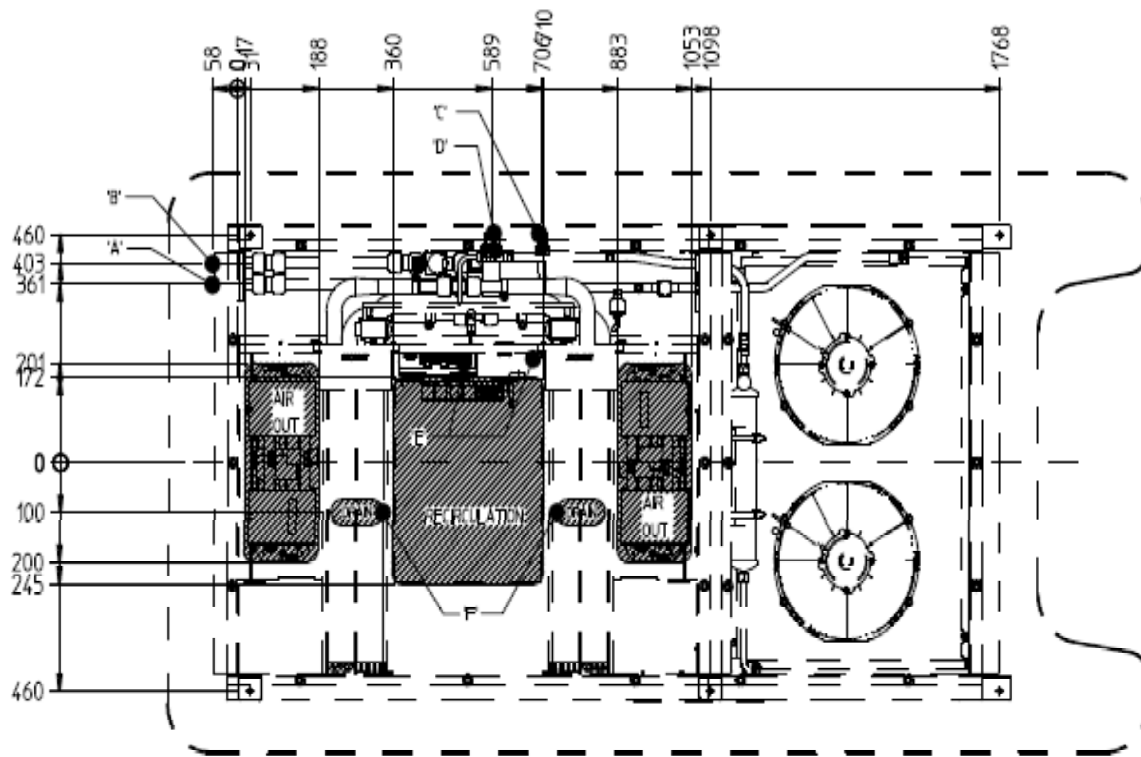


Rooftop Mountable Units *SON* 50

Featuring an aerodynamically shaped body to enhance overall vehicle travel efficiencies, this particular device can unleash power and performance unlike most any roof-mounted units before, especially at this level. *SON* features the duality of both heating, and cooling packed into one slim, high-performance unit. Loaded with awesome features: brushless evaporator blowers, a central duct, controller intergrade in unit or dashboard — all lightweight and ready for plug & play function. Best mounted on cabin sizes like a mid-sized bus.

Performance	
Maximum Cooling Capacity	14 kW
Nominal Cooling Capacity	2.6 kW
Heating Capacity	30 kW
Airflow AC	2000 m ³ / h
Fresh air AC	0% — 100%
Maximum Current Draw	39 A
Dimensions	2270 x 1175 x 190
Weight	63 kg
Options	Cool-Only; Cool / Heat; Cool-Only with Fresh-Air; Cool / Heat with Fresh-Air



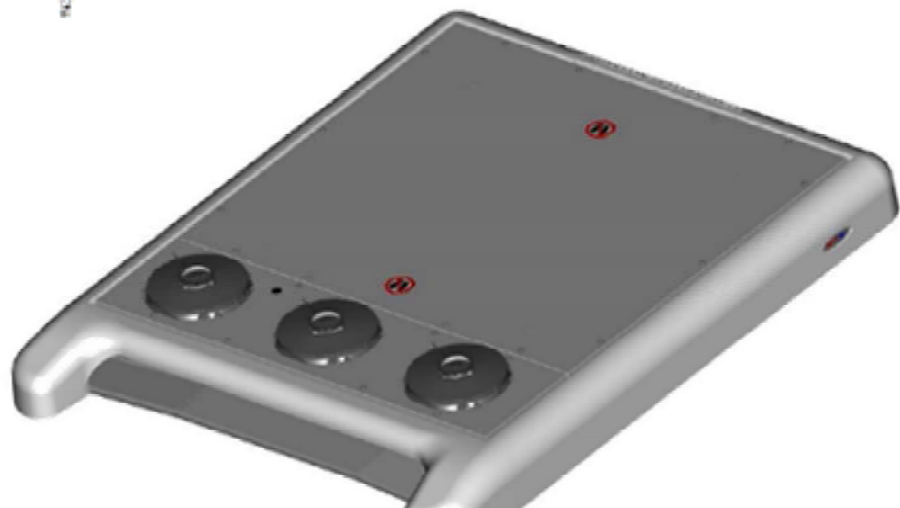
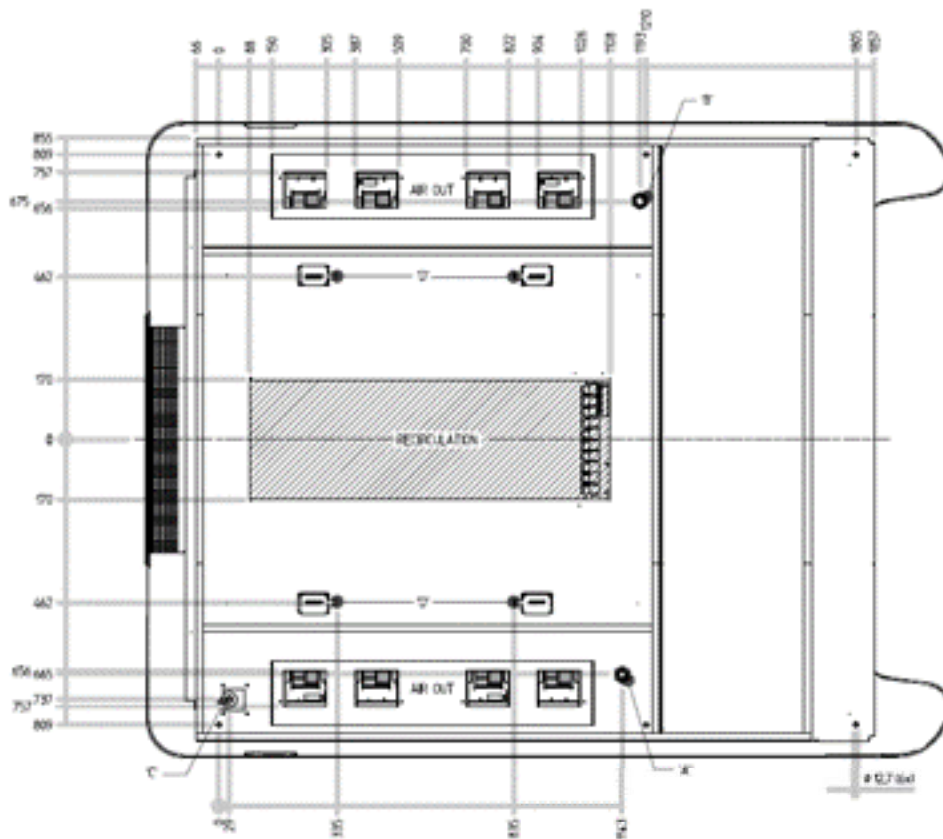


Rooftop Mountable Units *SON 70*

Aurora’s Electric, Compact Rooftop Units are versatile and ready to serve at the forefront of the next generation of HVAC. SON is engineered with mid-size busses in mind and comes complete with brushless evaporator blowers, a central duct, integrated controller either in-unit or on-dashboard, efficient heating performance, is both lightweight + plug-and-play.

Performance	
Maximum Cooling Capacity	24 kW
Nominal Cooling Capacity	18 kW
Heating Capacity	34 kW
Airflow AC	4800 m ³ / h
Fresh air AC	0% — 100%
Maximum Current Draw	70 A
Dimensions	2270 x 1800 x 290
Weight	113 kg





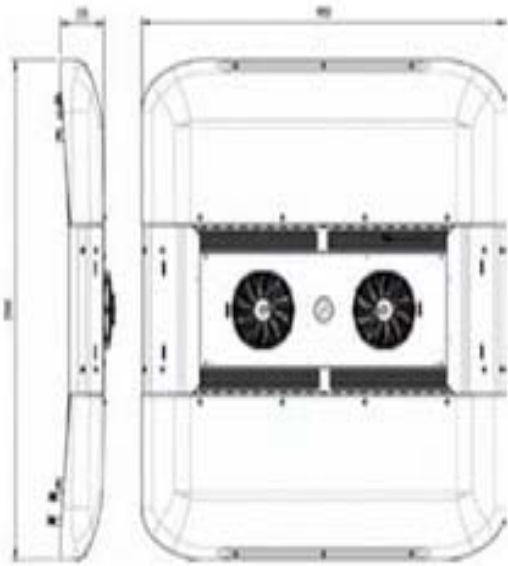
Rooftop Mountable Units *Boreas*

Aurora’s Electric, Compact Rooftop Units are versatile and ready to serve at the forefront of the next generation of HVAC.

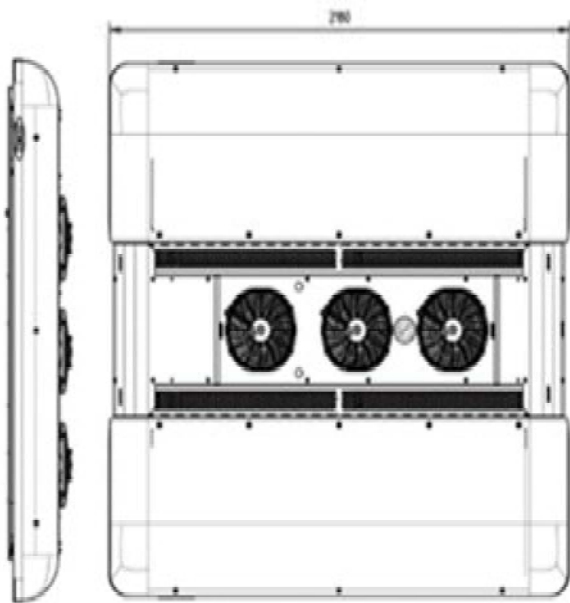
Every *Boreas* is recyclable as well as lightweight to empower sustainability in transportation for generations to come, these factors among others such as a wide-variety of power options make Boreas another perfect solution for bus drivers on-board city and intercity buses.

	Performance		
	Boreas 18	Boreas 24	Boreas 40
Maximum Cooling Capacity	18 kW	24 kW	39 kW
Nominal Cooling Capacity	11 kW	16 kW	29 kW
Heating Capacity	38 kW at Q80	38 kW at Q80	42 kW at Q80
Airflow AC	3800 m³ / h	3800 m³ / h	6000 m³ / h
Fresh air AC	0 – 100 %	0 – 100 %	0 – 100 %
Maximum Current Draw AC	60 A	70 A	115 A
Dimensions	2040 x 2180 x 240	2040 x 2180 x 240	2040 x 2180 x 240
Weight	120 kg	124 kg	128 kg
Refrigerant	R-134a	R-134 a	R-134 a
Compressor	TM-31	TM-43	TM-65

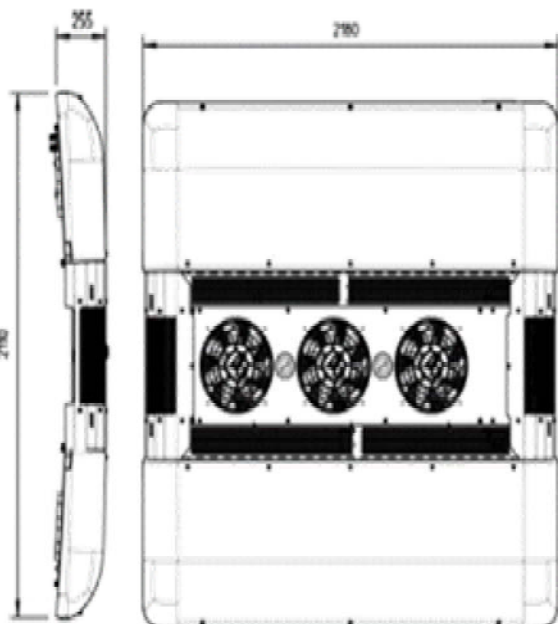




Model 18



Model 24



Model 40

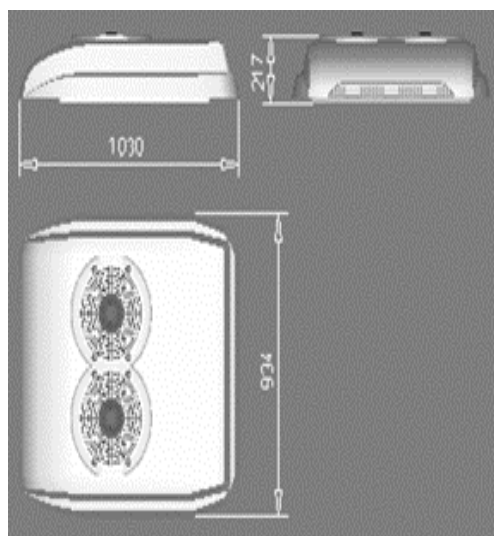


Rooftop Mountable Units *EOS* Series

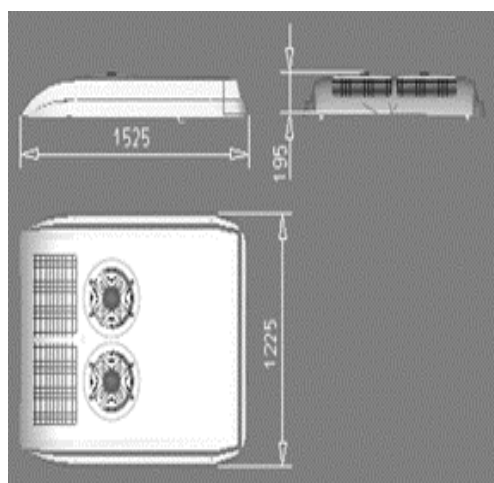
Aurora’s Electric, Compact Rooftop Units are versatile and ready to serve at the forefront of the next generation of HVAC. *EOS* is simply compact, yet tremendously powerful.

Performance			
	EOS 85	EOS 100	EOS 130
Cooling Capacity	8.5 kW / 29,000 BTU	10 kW / 34,200 BTU	13 kW / 44,400 BTU
Heating Capacity	10 kW / 34,100 BTU	14 kW / 47,800 BTU	16 kW / 54,700 BTU
Evaporator Airflow (Free-blowing)	1,650 m³ / h	2,300 m³ / h	2,300 m³ / h
Weight	30 kg	50 kg	75 kg
Nominal Voltage	12 V / 24 V	12 V / 24 V	12 V / 24 V
Maximum Current Draw	54 A / 27 A	65 A / 33 A	66 A / 33 A
Control System	AURORA CCE; AURORA ECR; AURORA ACD	AURORA CCE; AURORA ECR; AURORA ACD	AURORA CCE; AURORA ECR; AURORA ACD
Options	Heating; Fresh/Recirculation Air; Compressor and Bracket; Brushless Motor; Split Version	Heating; Fresh/Recirculation Air; Compressor and Bracket; Brushless Motor; Split Version	Heating; Fresh/Recirculation Air; Compressor and Bracket; Brushless Motor

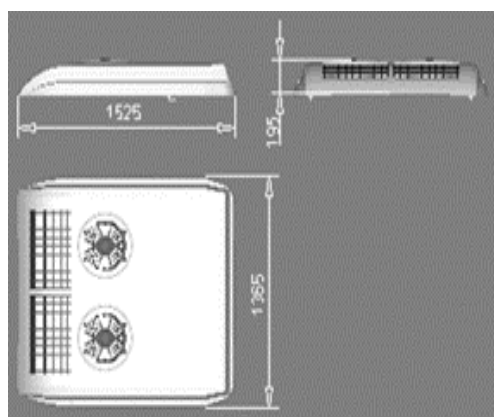




Model 85



Model 100



Model 130

