

glass-tube fuses 5x20



Part number	Characteristics
F1-5141-6723	miniature fuse 5x20; 250 V; 0,16 A; fast action; ceramic housing
F1-5142-0723	miniature fuse 5x20; 250 V; 0,2 A; fast action; ceramic housing
F1-5142-5720	miniature fuse 5x20; 250 V; 0,2 A; fast action; glass housing
F1-5145-0000	miniature fuse 5x20; 24 V; 0,5 A; glass housing
F1-5145-0740	miniature fuse 5x20; 250 V; 0,5 A; semi delay- action; glass housing
F1-5145-0760	miniature fuse 5x20; 250 V; 0,5 A; delay- action; glass housing
F1-5146-3723	miniature fuse 5x20; 250 V; 0,63 A; fast action; ceramic housing
F1-5151-0000	miniature fuse 5x20; 24 V; 1 A; glass housing
F1-5151-6723	miniature fuse 5x20; 250 V; 1,6 A; fast action; ceramic housing
F1-5152-0000	miniature fuse 5x20; 24 V; 2 A; glass housing
F1-5153-0000	miniature fuse 5x20; 24 V; 3 A; glass housing
F1-5153-1760	miniature fuse 5x20; 250 V; 3,15 A; delay- action; glass housing
F1-5154-0000	miniature fuse 5x20; 24 V; 4 A; glass housing
F1-5155-0000	miniature fuse 5x20; 24 V; 5 A; glass housing
F1-5155-0760	miniature fuse 5x20; 250 V; 5 A; delay- action; glass housing
F1-5156-0000	miniature fuse 5x20; 24 V; 6 A; glass housing
F1-5156-3762	miniature fuse 5x20; 250 V; 6,3 A; delay- action; sand- filled glass housing
F1-5158-0000	miniature fuse 5x20; 24 V; 8 A; glass housing
F1-5158-0762	miniature fuse 5x20; 250 V; 8 A; delay- action; glass housing
F1-5161-0000	miniature fuse 5x20; 24 V; 10 A; glass housing
F1-5161-0762	miniature fuse 5x20; 250 V; 10 A; delay- action; sand- filled glass housing
F1-5161-2000	miniature fuse 5x20; 24 V; 12 A; glass housing
F1-5161-5000	miniature fuse 5x20; 24 V; 15 A; glass housing

fuses/accessories

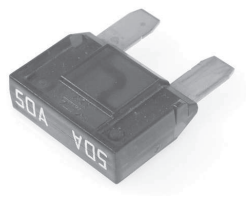
Part number	Characteristics
F1-5162-0000	miniature fuse 5x20; 24 V; 20 A; glass housing

glass-tube fuses 6,3x32



Part number	Characteristics
F1-5245-0720	miniature fuse 6,3x32; 250 V; 0,5 A; glass housing
F1-5251-0000	miniature fuse 6,3x32; 24 V; 1 A; glass housing
F1-5251-0720	miniature fuse 6,3x32; 250 V; 1 A; fast action; glass housing
F1-5252-0000	miniature fuse 6,3x32; 24 V; 2 A; glass housing
F1-5252-0720	miniature fuse 6,3x32; 250 V; 2 A; fast action; glass housing
F1-5253-0000	miniature fuse 6,3x32; 24 V; 3 A; glass housing
F1-5253-1720	miniature fuse 6,3x32; 250 V; 3,15 A; fast action; glass housing
F1-5254-0720	miniature fuse 6,3x32; 250 V; 4 A; fast action; glass housing
F1-5255-0000	miniature fuse 6,3x32; 24 V; 5 A; glass housing
F1-5256-3720	miniature fuse 6,3x32; 250 V; 6,3 A; fast action; glass housing
F1-5257-5000	miniature fuse 6,3x32; 24 V; 7,5 A; glass housing
F1-5258-0720	miniature fuse 6,3x32; 250 V; 8 A; fast action; glass housing
F1-5261-0000	miniature fuse 6,3x32; 24 V; 10 A; glass housing
F1-5261-5000	miniature fuse 6,3x32; 24 V; 15 A; glass housing
F1-5262-0000	miniature fuse 6,3x32; 24 V; 20 A; glass housing
F1-5262-5000	miniature fuse 6,3x32; 24 V; 25 A; glass housing
F1-5263-0000	miniature fuse 6,3x32; 24 V; 30 A; glass housing
F1-5263-5000	miniature fuse 6,3x32; 24 V; 35 A; glass housing

MaxiVal fuses



Part number	Characteristics
F1-1262-0000	MaxiVAL; 32 V; 20 A
F1-1263-0000	MaxiVAL; 32 V; 30 A
F1-1264-0000	MaxiVAL; 32 V; 40 A
F1-1265-0000	MaxiVAL; 32 V; 50 A
F1-1266-0000	MaxiVAL; 32 V; 60 A
F1-1267-0000	MaxiVAL; 32 V; 70 A
F1-1268-0000	MaxiVAL; 32 V; 80 A
F1-1271-0000	MaxiVAL; 32 V; 100 A

accessories

MaxiVal fuseholders (S. 58)

MegaVal fuses

Part number	Characteristics
F1-2171-0000	MegaVal; 32 V; 100 A
F1-2171-2000	MegaVal; 32 V; 125 A
F1-2171-5000	MegaVal; 32 V; 150 A
F1-2171-7000	MegaVal; 32 V; 170 A
F1-2172-0000	MegaVal; 32 V; 200 A
F1-2172-2000	MegaVal; 32 V; 225 A
F1-2172-5000	MegaVal; 32 V; 250 A
F1-2175-0000	MegaVal; 32 V; 500 A
F1-2173-0010	PowerVal; 32 V; CAL.2
F1-2174-0010	PowerVal; 32 V; CAL.4
F1-2175-0010	PowerVal; 32 V; CAL.5

accessories

MegaVal fuseholders (S. 62)

MidiVal fuses



Part number	Characteristics
F1-2063-0000	MidiVal; 32 V; 30 A
F1-2064-0000	MidiVal; 32 V; 40 A
F1-2065-0000	MidiVal; 32 V; 50 A
F1-2066-0000	MidiVal; 32 V; 60 A
F1-2067-0000	MidiVal; 32 V; 70 A
F1-2068-0000	MidiVal; 32 V; 80 A
F1-2071-0000	MidiVal; 32 V; 100 A
F1-2071-2000	MidiVal; 32 V; 125 A

accessories

MidiVal fuseholders (S. 65)

MiniVal fuses

Part number	Characteristics
F1-1052-0000	MiniVAL; 32 V; 2 A
F1-1053-0000	MiniVAL; 32 V; 3 A
F1-1054-0000	MiniVAL; 32 V; 4 A
F1-1055-0000	MiniVAL; 32 V; 5 A
F1-1057-5000	MiniVAL; 32 V; 7,5 A
F1-1061-0000	MiniVAL; 32 V; 10 A
F1-1061-5000	MiniVAL; 32 V; 15 A
F1-1062-0000	MiniVAL; 32 V; 20 A
F1-1062-5000	MiniVAL; 32 V; 25 A
F1-1063-0000	MiniVAL; 32 V; 30 A

accessories

MiniVal fuseholders (S. 69)

stripe fuses, 30mm hole distance

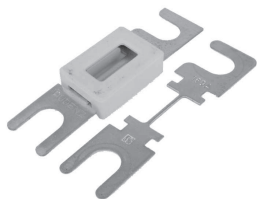


Part number	Characteristics
F1-3162-5000	strip fuse 30mm; 32 V; 25 A
F1-3163-0000	strip fuse 30mm; 32 V; 30 A
F1-3164-0000	strip fuse 30mm; 32 V; 40 A
F1-3165-0000	strip fuse 30mm; 32 V; 50 A
F1-3166-0000	strip fuse 30mm; 32 V; 60 A
F1-3168-0000	strip fuse 30mm; 32 V; 80 A
F1-3171-0000	strip fuse 30mm; 32 V; 100 A
F1-3171-1000	strip fuse 30mm; 32 V; 110 A
F1-3171-2000	strip fuse 30mm; 32 V; 120 A
F1-3171-2500	strip fuse 30mm; 32 V; 125 A
F1-3171-5000	strip fuse 30mm; 32 V; 150 A

accessories

MidiVal fuseholders (S. 65)

stripe fuses, 60mm hole distance

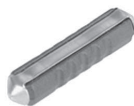


Part number	Characteristics
F1-2565-0000	strip fuse with ceramic housing; 80 V; 50 A
F1-2568-0000	strip fuse with ceramic housing; 80 V; 80 A
F1-2571-0000	strip fuse with ceramic housing; 80 V; 100 A
F1-2571-2000	strip fuse with ceramic housing; 80 V; 125 A
F1-3463-5000	strip fuse 60mm; 80 V; 35 A
F1-3466-3000	strip fuse 60mm; 80 V; 63 A
F1-3468-0000	strip fuse 60mm; 80 V; 80 A
F1-3471-0000	strip fuse 60mm; 80 V; 100 A
F1-3471-2000	strip fuse 60mm; 80 V; 125 A
F1-3471-5000	strip fuse 60mm; 80 V; 150 A
F1-3471-6000	strip fuse 60mm; 80 V; 160 A
F1-3472-5000	strip fuse 60mm; 80 V; 250 A
F1-3474-2000	strip fuse 60mm; 80 V; 420 A

accessories

strip fuseholders (S. 71)

torpedo fuses



Part number	Characteristics
F1-5055-0000	torpedo fuse; 32 V; 5 A
F1-5058-0000	torpedo fuse; 32 V; 8 A
F1-5061-0000	torpedo fuse; 32 V; 10 A
F1-5061-6000	torpedo fuse; 32 V; 16 A
F1-5062-5000	torpedo fuse; 32 V; 25 A

accessories

torpedo fuseholder (S. 72)

UniVal fuses



Part number	Characteristics
F1-1151-0000	UniVal; 32 V; 1 A
F1-1152-0000	UniVal; 32 V; 2 A
F1-1153-0000	UniVal; 32 V; 3 A
F1-1154-0000	UniVal; 32 V; 4 A
F1-1155-0000	UniVal; 32 V; 5 A
F1-1157-5000	UniVal; 32 V; 7,5 A
F1-1161-0000	UniVal; 32 V; 10 A
F1-1161-5000	UniVal; 32 V; 15 A
F1-1162-0000	UniVal; 32 V; 20 A
F1-1162-5000	UniVal; 32 V; 25 A
F1-1163-0000	UniVal; 32 V; 30 A
F1-1164-0000	UniVal; 32 V; 40 A

accessories

UniVal fuseholders (S. 78)

