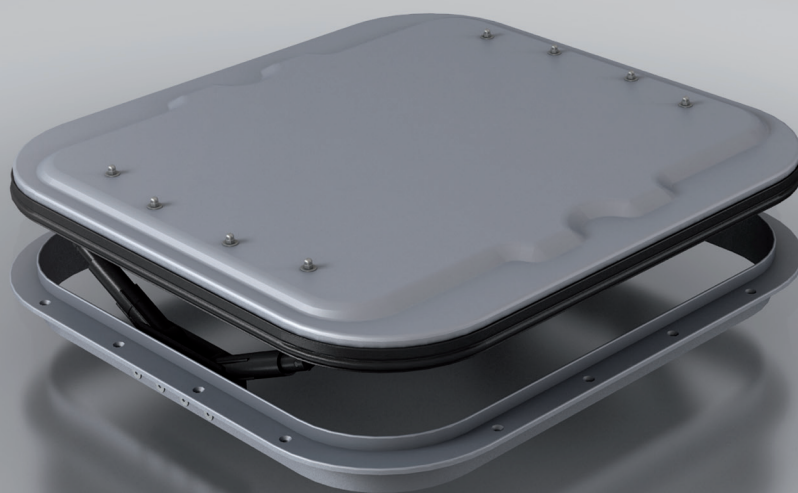


# 16/84

## BOTOLA

### ROOF HATCH



#### CARATTERISTICHE STANDARD

- Applicazione: Aerazione;
- Dimensioni d'ingombro telaio: 600x650 mm;
- Dispositivo di apertura: 2 manuali in acciaio e tecnopolimeri stampati;
- Coperchio in alluminio stampato e anodizzato;
- Telaio di fissaggio in alluminio anodizzato.

#### STANDARD FEATURES

- Application: Ventilation;
- Roof-aperture for assembly frame: 600x650 mm;
- Opening device: 2 manual arms in steel and injected techno-polymers;
- Moulded dome in anodized aluminum;
- Assembly frame in anodized aluminum.

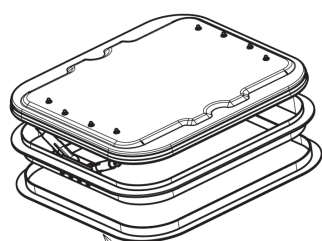




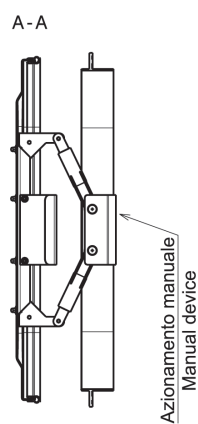
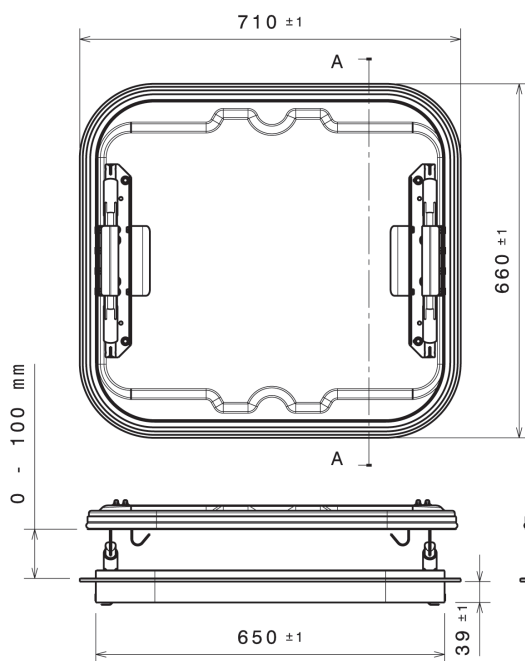
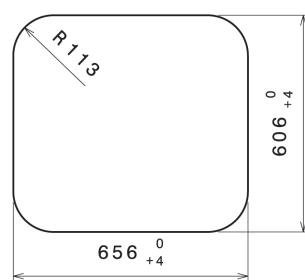
**SCARICA LA SCHEDA TECNICA**  
DATASHEET DOWNLOAD



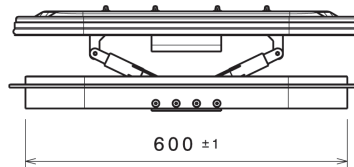
**DIMENSIONI SEDE PER BOTOLA**  
Size for hatch housing



Cornice di finitura interna in alluminio opzionale  
Aluminum optional inner frame



Azionamento manuale  
Manual device



LAM S.p.A.  
Via Guido Rossa, 4 - 41057 Spilamberto (MO) - Italy  
Tel. +39 059 784392 - Fax +39 059 8638048  
[www.lamspa.it](http://www.lamspa.it)

ISO 9001:2015  
IATF 16949:2016

