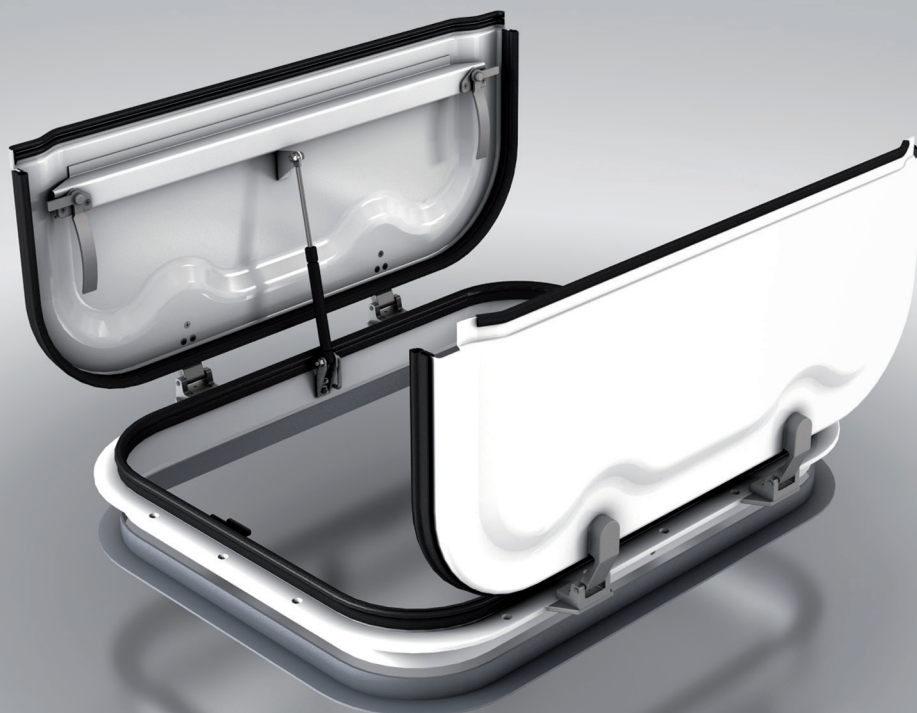


# 56/94

## BOTOLA

ROOF HATCH

**Forze armate • Military**



### CARATTERISTICHE STANDARD

- Applicazione: Passo d'uomo;
- Apertura dal centro in due semigusci;
- Dispositivi di apertura: molla a gas per apertura a 90° + cerniere esterne per apertura a 180°;
- Dimensioni d'ingombro telaio 750x580mm;
- Coperchio in acciaio stampato e verniciato;
- Telaio di fissaggio in alluminio anodizzato.

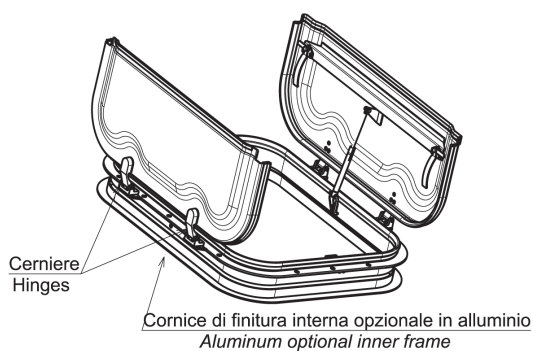
### STANDARD FEATURES

- Application: Crawl space;
- Central dome aperture in two half-shells ;
- Opening device: gas spring for dome tilting at 90° + External hinges for dome tilting at 180°;
- Roof-aperture for assembly frame 750x580 mm;
- Moulded dome in painted steel;
- Assembly frame in anodized aluminum.

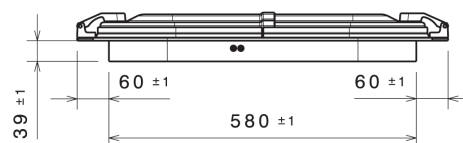
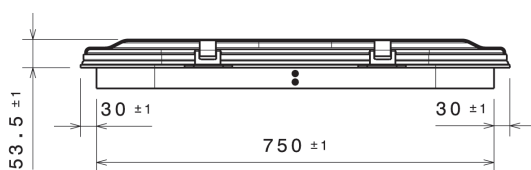
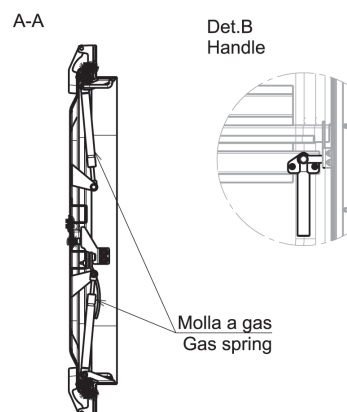
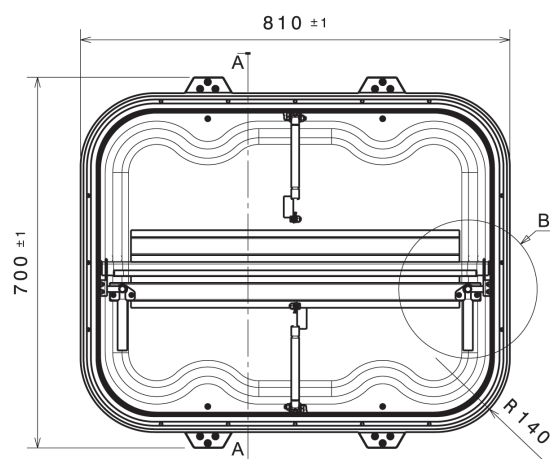
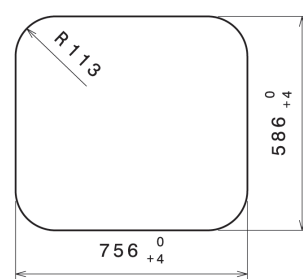




**SCARICA LA SCHEDA TECNICA**  
DATASHEET DOWNLOAD



**DIMENSIONI SEDE PER BOTOLA**  
Size for hatch housing



LAM S.p.A.  
Via Guido Rossa, 4 - 41057 Spilamberto (MO) - Italy  
Tel. +39 059 784392 - Fax +39 059 8638048  
[www.lamspa.it](http://www.lamspa.it)

ISO 9001:2015  
IATF 16949:2016

