

LOUVERS

DURABLE, DYNAMIC,
USER-FRIENDLY



Ventilation Louvers Air Grills

Aurora’s Air Grills have horizontal fixed air guide vanes that can be used in both air intake and outtake applications. The grills are designed to allow for different filtration elements in order to keep all foreign and unwanted objects out of the air circulation system. The grills come in several sizes and shapes, and some also have pegged inserts for easier installation with various filtration options.

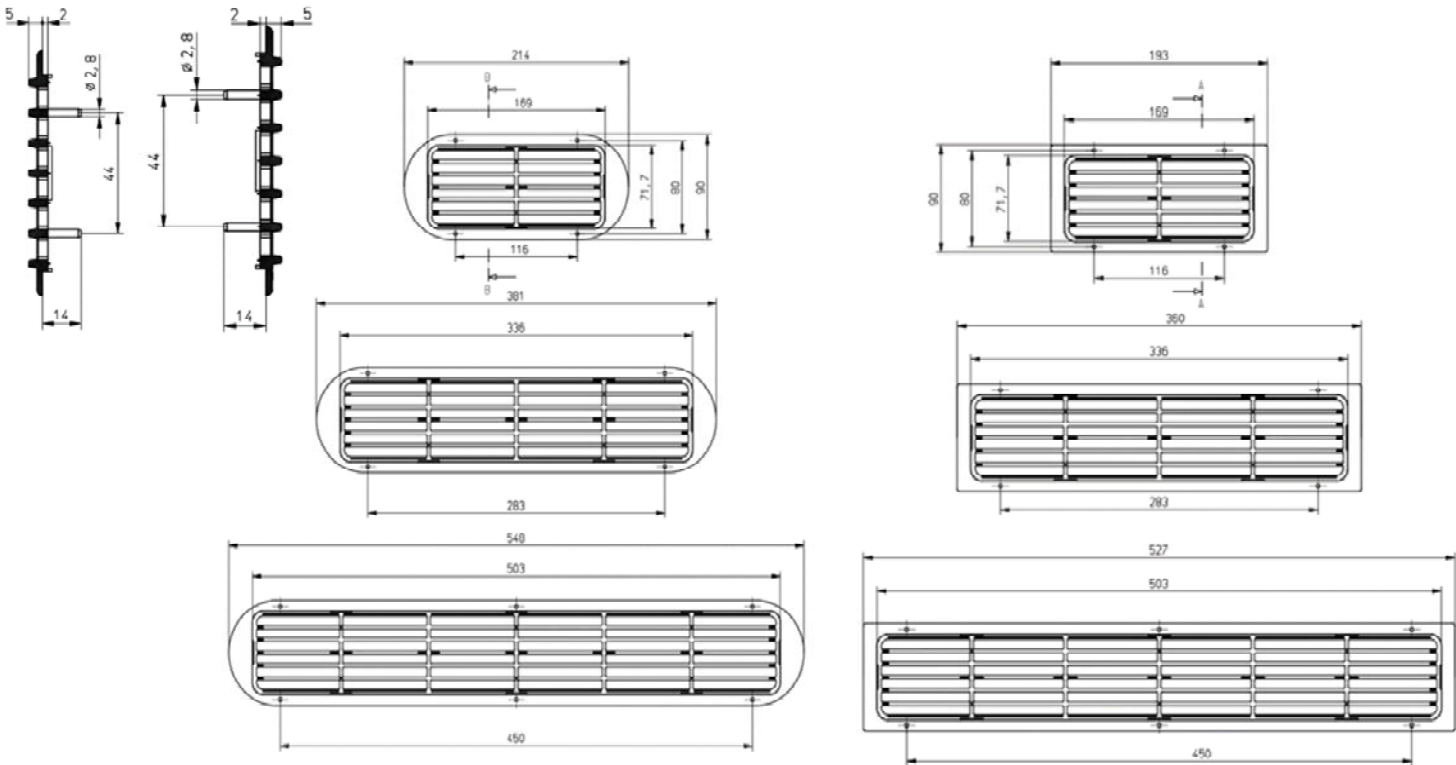
Material and Color

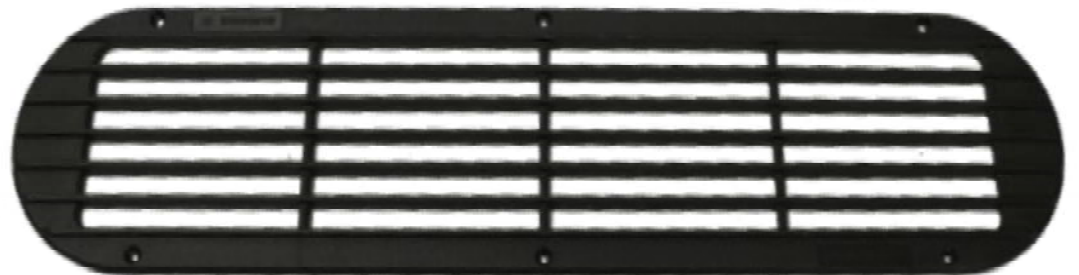
Polyamide PA6 15% glass fiber reinforced
Standard Color: black, similar to RAL 9005

Technical Information

912-100-0324

Variations	
Part Number	Description
431-410-0010	Round Long
431-410-0011	Round Medium
431-410-0012	Round Short
334-130-0001	Round Long with ppi30 filter
334-130-0002	Round Medium with ppi30 filter
334-130-0003	Round Short with ppi30 filter
431-410-0020	Edged Long
431-410-0021	Edged Medium
431-410-0022	Edged Short





Round Louvers RD70

RD70, named such for its 70mm. diameter, features flaps, a 3mm. as well as 5mm. dashboard clip adaptor standard, and an optional 50mm. hose adaptor — all for easy affixation into most any hole spaces near its size. Flaps that rotate 360 degrees in a clockwise manner of the Louver provide for maximum air concentration in any user-defined, desired direction.

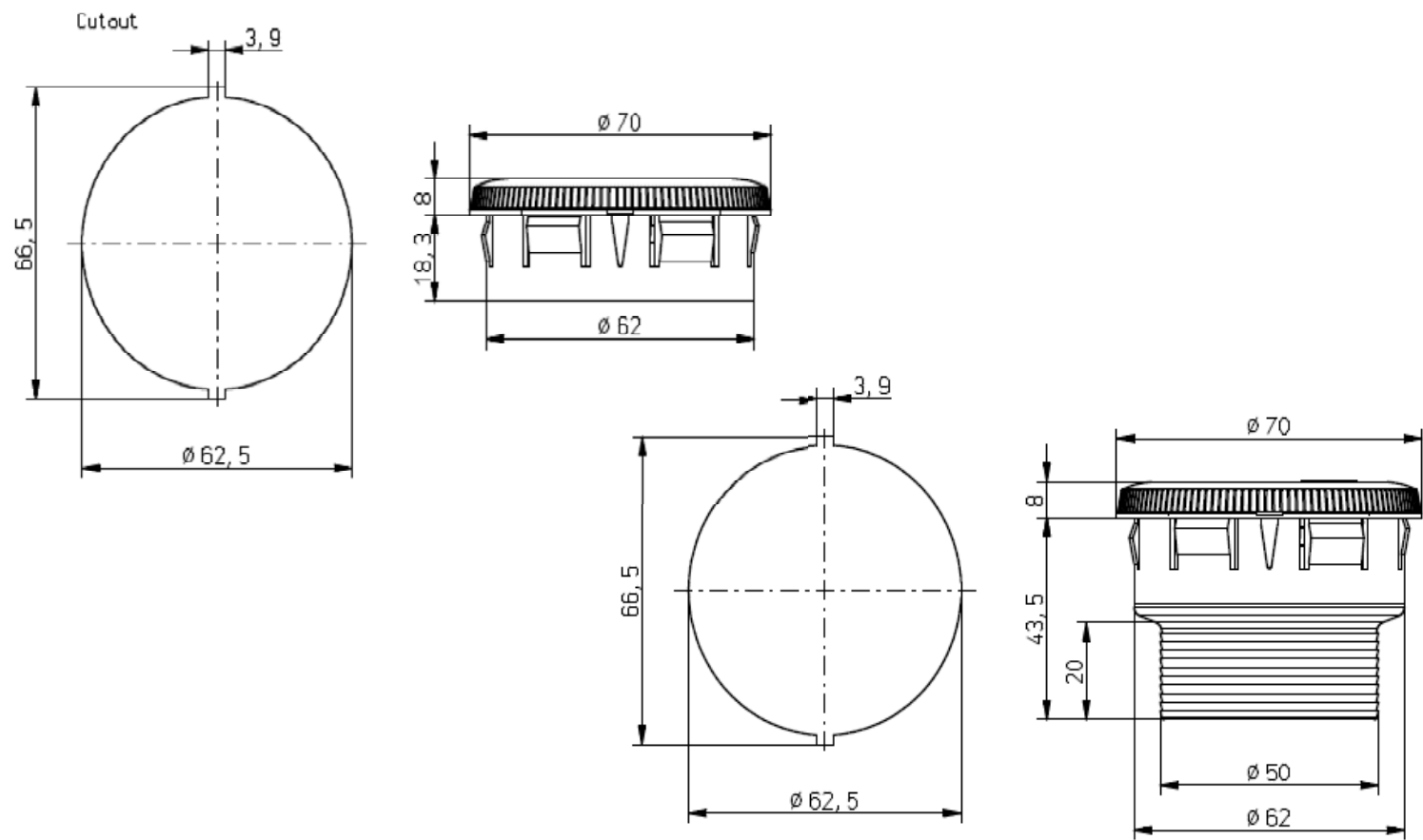
Material and Color

Polyamide PA6 35% glass fiber reinforced
Standard Color: black, similar to RAL 9005

Technical Information

912-100-0178

Variations		
Part Number	Clip Range	Descriptions
334-220-0046	3 or 5 mm	RD 70 Black - Clip
334-220-0045	3 - 5 mm	RD 70 Black with 50 mm Ø Hose Adaptor



Printed widths (2.75"/ 70mm diameter) closely mimic actual piece size



Pictured from Top-to-Bottom: RD70 without Adaptor; RD70 with 50mm. Ø Hose Adaptor

Round Louvers RD83

AURORA's *RD83* is built for the industry. This next generation louver comes standard with 2mm, 3mm, 4mm, and 5mm clip ranges. The *RD 83's* convex design allows for maximum air flow in any desired direction. Perfect for personal airflow, these round louvers are best used in dash and headliner applications. *RD 83* also snaps closed for complete air shut off. Various color options for the Louver's outer ring are also available upon request (see title page for examples).

Material & Color

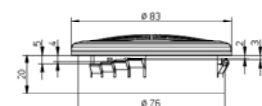
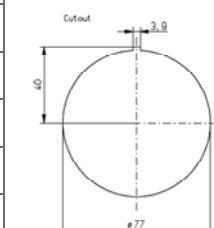
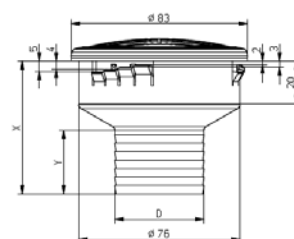
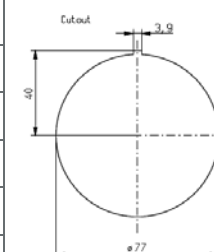
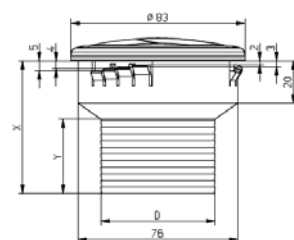
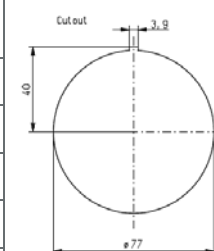
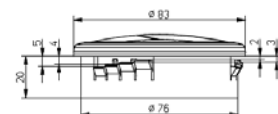
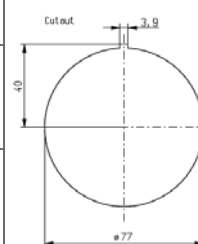
Polyamide PA6 35% glass fiber reinforcement
Standard Color: black, similar to RAL 9005

Technical Information

912-100-0911 / 912-100-0505

Variations

Description	Subcategories	Part Number	D – Adaptor Ø	X (mm)	Y (mm)
Custom, Flaps Version with Clip Adaptor	RD83 Standard Black no adaptor	334-220-0122	—	—	—
	Silver Ring Accent no adaptor	334-220-0123	—	—	—
	Chrome Ring Accent no adaptor	334-220-0154	—	—	—
Standard Black, Flaps Version with Clip & Hose Adaptor		334-220-0144	42 mm	62.5	30
		334-220-0145	50 mm	49	18
		334-220-0146	55 mm	62.5	35
		334-220-0147	60 mm	62.5	35
		334-220-0148	65 mm	63.5	38
		334-220-0149	70 mm	63	40
		334-220-0150	75 mm	50	28
Standard Black, Grill Version with Clip & Hose Adaptor		334-220-0155	42 mm	62.5	30
		334-220-0156	50 mm	49	18
		334-220-0157	55 mm	62.5	35
		334-220-0158	60 mm	62.5	35
		334-220-0159	65 mm	63.5	38
		334-220-0160	70 mm	63	40
		334-220-0161	75 mm	50	28
Custom, Grill Version with Clip	Standard Black	334-220-0142	—	—	—
	Silver Ring	334-220-0127	—	—	—
	Chrome Ring	334-220-0168	—	—	—



Printed widths (3.25" / 83mm. diameter) closely mimic actual piece size



Standard Black with Flaps & Clip Adaptor



Custom with Silver or Colored-Ring & Clip



Custom with Chrome Ring & Clip Adaptor



Standard Black with Fixed Vanes / Grill &
Hose Adaptor



Standard Black with Flaps & Hose Adaptor

Round Louvers RD85

This particular, robust round 85mm louver is intended for use in multiple locations (headliners, dash panels, cabin floor). With either a 3mm or 5mm clip range, *RD85* can easily snap into most surfaces. The 360° rotation of the louver provides maximum air concentration in most every desired direction. *RD85*'s rugged design is ideal for heavy machinery, especially whenever durability matters most.

Material & Color

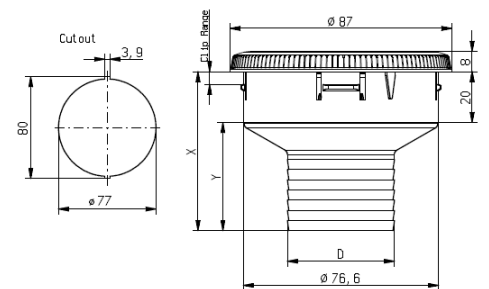
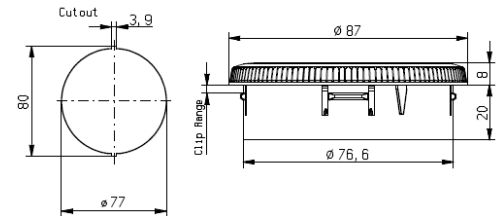
Polyamide PA6 35% glass fiber reinforcement
Standard Color: black, similar to RAL 9005

Technical Information

912-100-0911 / 912-100-0178

Variations

Description	Part Number	D – Adaptor Ø	X (mm)	Y (mm)
3mm Clip Standard Black Flaps	334-220-0052	None	n/a	n/a
	335-220-0053	42mm	62.5	30
	334-220-0054	50mm	49	18
	334-220-0055	55mm	62.5	35
	334-220-0084	60mm	62.5	35
	334-220-0056	65mm	63.5	38
	334-220-0057	70mm	63	40
	334-220-0058	75mm	50	28
5mm Clip Standard Black Flaps	334-220-0013	None	n/a	n/a
	334-220-0024	42mm	62.5	30
	334-220-0025	50mm	49	18
	334-220-0026	55mm	62.5	35
	334-220-0083	60mm	62.5	35
	334-220-0027	65mm	63.5	38
	334-220-0028	70mm	63	40
	334-220-0029	75mm	50	28
3mm Clip featuring Grey Flaps	334-220-0108	—	—	—
3mm, Clip Standard Black Grill	334-220-0060	None	-	-
	334-220-0061	42mm	62.5	30
	334-220-0062	50mm	49	18
	334-220-0063	55mm	62.5	35
	334-220-0064	65mm	63.5	38
	334-220-0065	70mm	63	40
	334-220-0066	75mm	50	28
5mm, Clip Standard Black Grill	334-220-0075	None	-	-
	334-220-0076	42mm	62.5	30
	334-220-0077	50mm	49	18
	334-220-0078	55mm	62.5	35
	334-220-0079	65mm	63.5	38
	334-220-0080	70mm	63	40
	334-220-0079	75mm	50	28



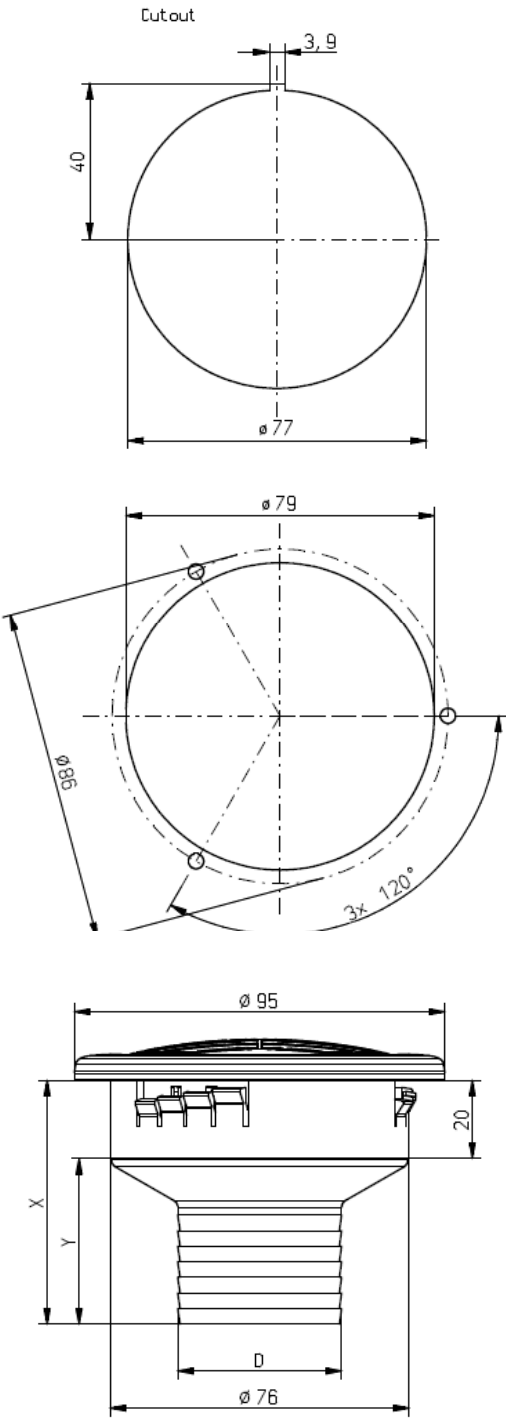
Printed widths (3.34" / 85mm. diameter) closely mimic actual piece size



Round Louvers RD95

AURORA’s round nozzle *RD 95* is built for the industry. This next generation louver comes standard with 2mm, 3mm, 4mm, and 5mm clip ranges. The *RD 95*s convex design allows for maximum air flow in most any desired direction. Awesome for personal airflow, these round louvers are best used in dash and headliner applications. The *RD 95* also snaps closed for complete air shut off.

Material & Color				
Polyamide PA6 35% glass fiber reinforcement Standard Color: black, similar to RAL 9005				
Technical Information				
912-100-1041				
Variations				
Description	Part Number	D – Adaptor Ø	X (mm)	Y (mm)
Flaps Version Standard Black	334-220-0136	No Adaptor	60.5	20
	334-220-0178	42 mm	62.5	30
	334-220-0179	50 mm	49	18
	334-220-0180	55 mm	62.5	35
	334-220-0181	60 mm	62.5	35
	334-220-0182	65 mm	63.5	38
	334-220-0183	70 mm	63	40
	334-220-0184	75 mm	50	28
Grill Version Standard Black	334-220-0177	No Adaptor	60.5	20
	334-220-0185	42 mm	62.5	30
	334-220-0186	50 mm	49	18
	334-220-0187	55 mm	62.5	35
	334-220-0188	60 mm	62.5	35
	334-220-0189	65 mm	63.5	38
	334-220-0190	70 mm	63	40
	334-220-0191	75 mm	50	28



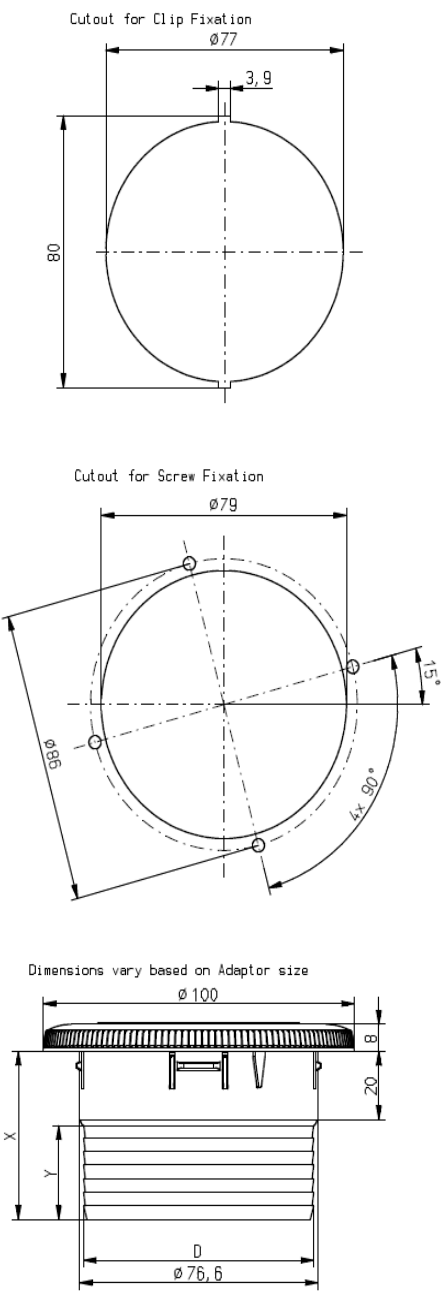
Printed widths (3.74" / 95mm. diameter) closely mimic actual piece size



Round Louvers RD100

RD100 is available either with or without adaptors. The robust round 100.0mm diameter Louver is intended for use in headliners or dash consoles. This Louver is built for durability and massive spot airflow. Its multiple fixation capabilities also make this louver extremely adaptable. With a standard 3mm clip range, this component easily snaps into most surfaces. For headliners and dash cutouts greater than a 3mm thickness, the RD 100 can also be fixed into position via screw holes in the mounting base. The 360° rotation of RD 100 louver provides maximum air flow in most any desired direction.

Material & Color				
Polyamide PA6 35% glass fiber reinforcement Standard Color: black, similar to RAL 9005				
Technical Information				
912-100-0699 (Nexus) / 912-100-0178 (Flaps Traditional) / 912-100-0505 (Grill)				
Variations				
Description	Part Number	D – Adaptor Ø	X (mm)	Y (mm)
Flaps Version Traditional Bezel	334-220-0016	No Adaptor	n/a	n/a
	334-220-0017	41.5	62.5	30
	334-220-0018	50	49	18
	334-220-0019	55	62.5	35
	334-220-0082	60	62.5	35
	334-220-0020	65	62.5	38
	334-220-0021	70	63	40
	334-220-0022	75	50	28
Flaps Version Nexus with 0.5-9 mm. clip range	334-220-0102	No Adaptor	n/a	n/a
Grill Version Traditional Bezel	334-220-0067	No Adaptor	n/a	n/a
	334-220-0069	41.5	62.5	30
	334-220-0070	50	50	18
	334-220-0071	55	62.5	35
	334-220-0086	60	62.5	35
	334-220-0072	65	63.5	38
	334-220-0073	70	63	40
	334-220-0074	75	50	28



Printed widths closely mimic actual piece size.



Round Louvers Specialty with 90°

This Louver features a specialty, 90 degree hose adapter to accommodate attachment to spaces, which are otherwise not reachable in any other manner. Representing yet another significant sign of the Aurora Group’s flexibility factored into the design of its standard component Solutions.

Material and Color

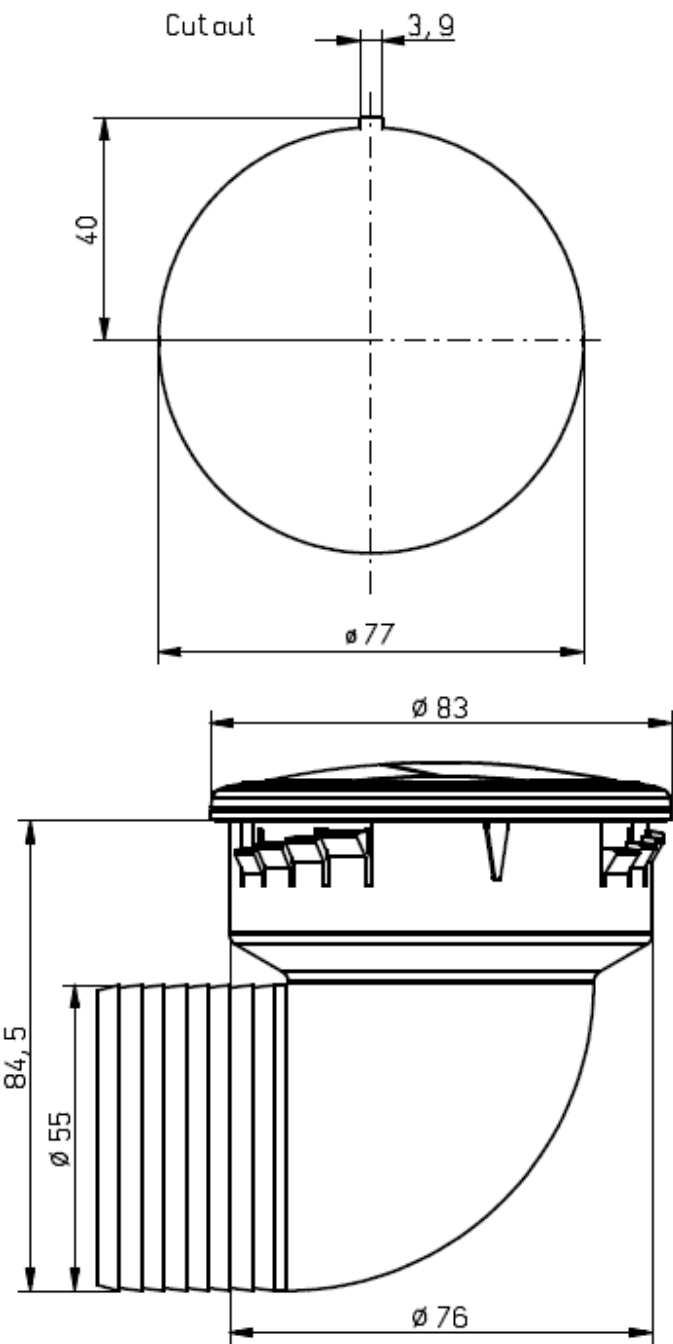
Polyamide PA6 35% glass fiber reinforced
Standard Color: black, similar to RAL 9005

Technical Information

912-100-0911 + 912-100-0505

Variations

Part Number	Description
334-220-0162	RD 100.55 - 3mm clip Grill Version with 90° adaptor
334-220-0163	RD 83.55 – 2/3/4/5mm Clip version with 90° adaptor



Printed dimensions of photographs no longer mimic actual size.



Round Louvers RD120

As the largest Round Louver in Aurora’s variety, this Round 120.0mm diameter Louver is intended for use in multiple locations (headliners, dash panels, foot spaces). *RD 120* has a standard 3mm Clip Range. Coupled with screw fastening capabilities, this component can easily be mounted into any surface. The 360 degree rotation of the louver provides maximum air concentration in most every desired direction. This gigantic louver is specially designed for near zero breakages across even the roughest, most rugged environments.

Material and Color

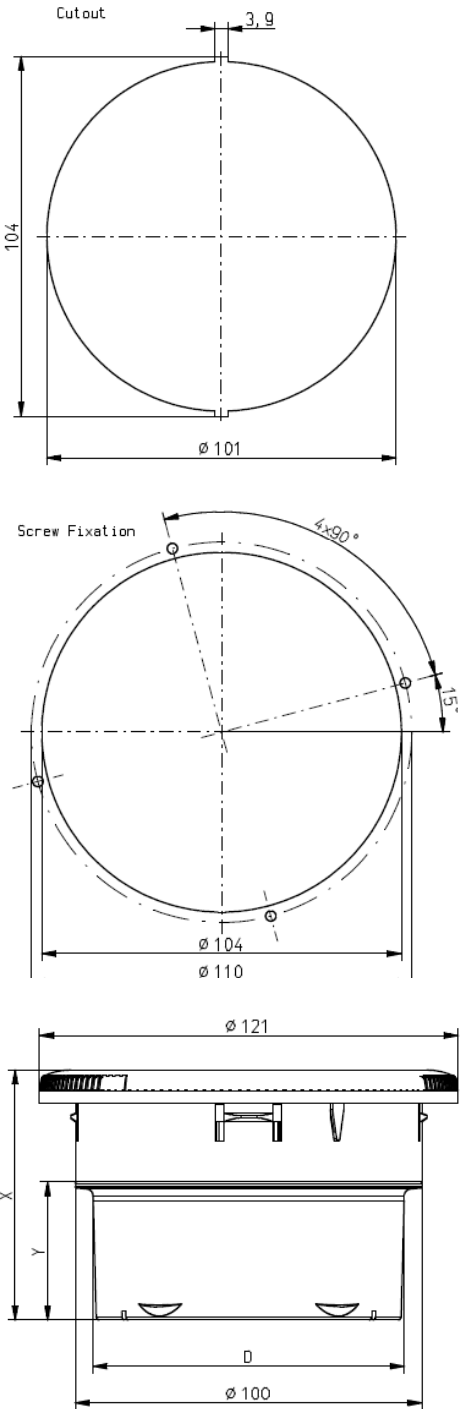
Polyamide PA6 35% glass fiber reinforced
Standard Color: black, similar to RAL 9005

Technical Information

912-100-0178

Variations

Part Number	D Adaptor Ø (mm)	X (mm)	Y (mm)
334-220-0030	None	29	n/a
334-220-0090	90	72	40



Printed dimensions (4.72" / 120mm. diameter) closely mimic actual piece size

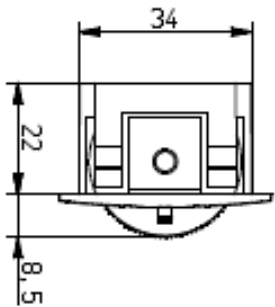


Rectangular Louvers Thin Louver

Aurora’s Thin Louver incorporates a slim design for installation in spaces where room is scarce. The roll function allows the operator adjust the direction of airflow to the desired destination. The flap control also adds to the adjustability. When closed, the louver is completely shut. Thin Louvers have excellent flow characteristics in a compact size and are ideal in the support posts or even to utilize as a defrost louver.

Material and Color

Polyamide PA6 35% glass reinforced
Standard Color: black, similar to RAL 9005

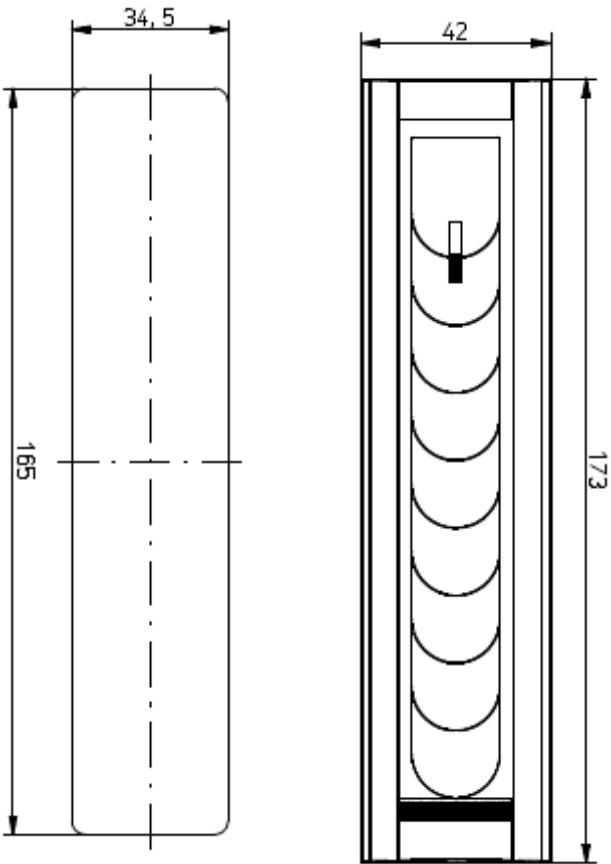


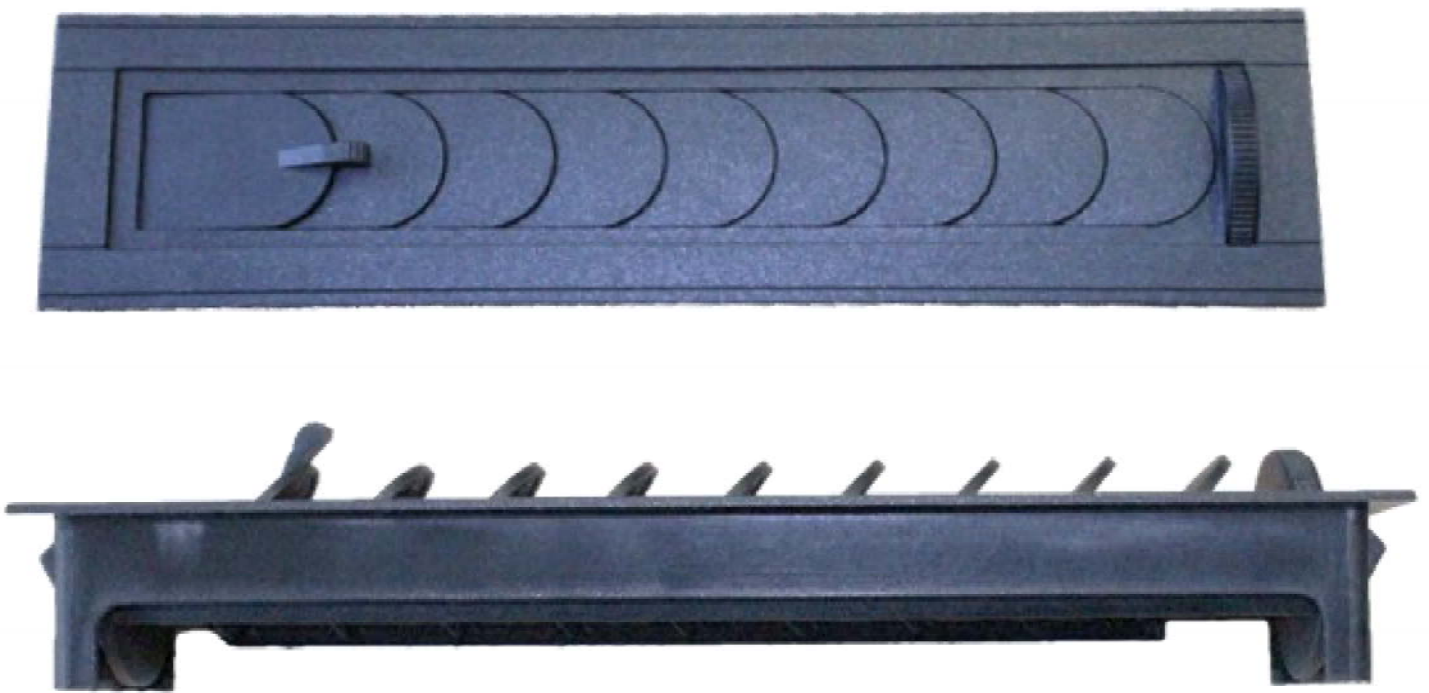
Technical Information

912-100-0469

Variations

Variations	
Part Number	Description
334-315-0002	Thin Louver Black





Rectangular Louvers Vector Nozzle

Aurora’s Vector Nozzle is the ultimate defrost or under the seat louver. With fixed vanes to optimize airflow over the desired surface area, the Vector was designed for defrosting and defogging glass. This component also doubles as a great below the seat option. With a faceplate, this grill prevents any foreign objects from entering the ducting while the spindle allows the operator the option for complete air shut-off in order to allocate maximum air flow to additional areas of the operating environment.

Material and Color

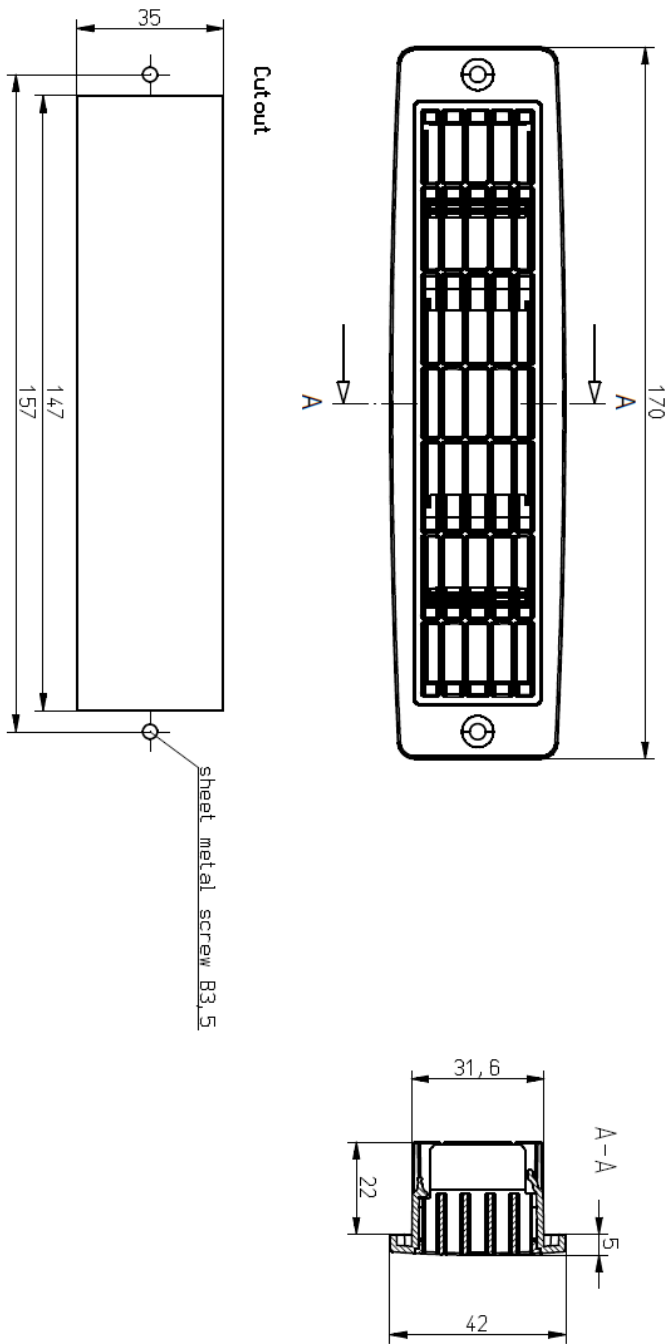
Polyamide PA6 35% glass reinforced
Standard Color: black, similar to RAL 9005

Technical Information

912-100-0950

Variations

Part Number	Description
334-150-0014	Screw Version Flaps
334-150-0017	Clip Version Flaps
334-150-0016	Screw Version Fix Grill
334-150-0018	Clip Version Fix Grill



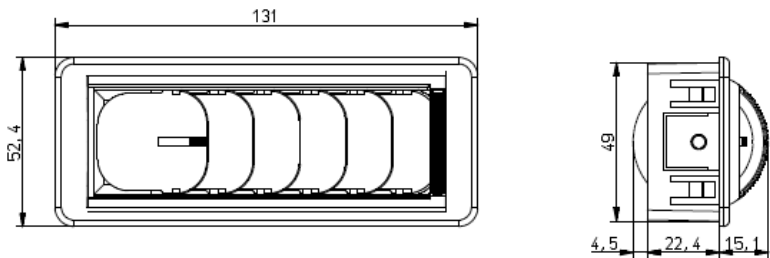


Rectangular Louvers Small Louver I

Aurora’s small louver has a narrow bezel with vanes that open, close, and roll, providing excellent air distribution. The rugged design allows these louvers to be placed in all locations of the cab. Both the screw and clip versions provide easy mounting options for versatile usage. The Small Louver is an excellent option for headliners, dash panels, and A or B pillars.

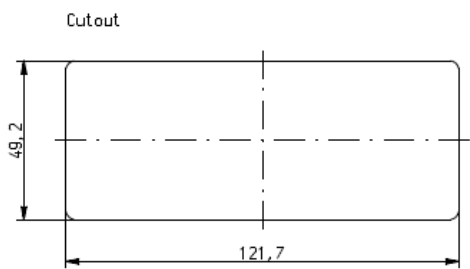
Material and Color

Polyamide PA6 35% glass fiber reinforced
Standard Color: black, similar to RAL 9005



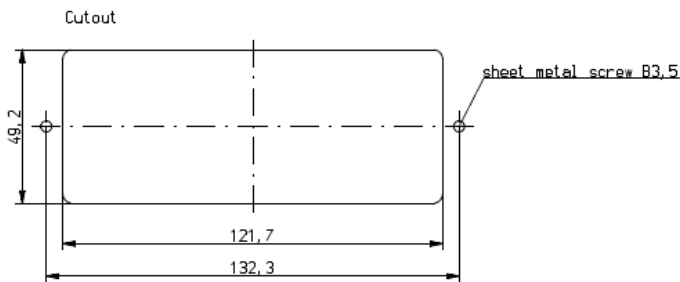
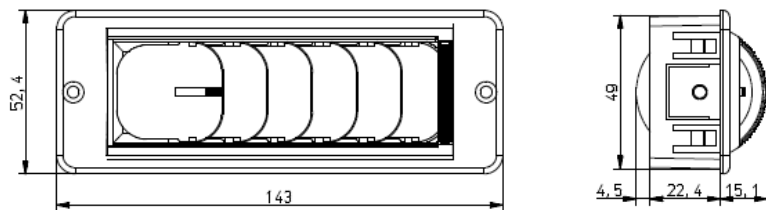
Technical Information

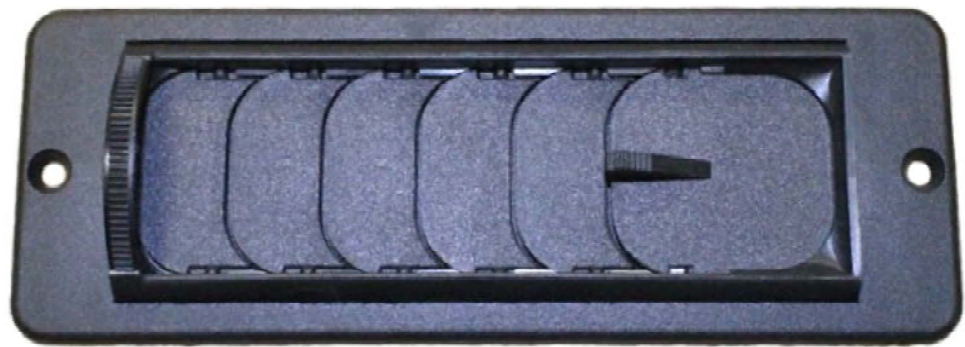
912-100-0066 / 912-100-0176 / 912-100-0234



Variations

Part Number	Attachment
334-314-0003	Screw
334-314-0004	Clip
334-314-0023	Screw with 59mm Clip





Rectangular Louvers Small Louver II

Aurora’s newest edition to the Small Louver family. This edition has a new facelift with arched bezels for a modern looking design. Coupled with the same durability and features as the rest of the family, these louvers are a universal rectangular solution to all locations in the cab. Both the screw and clip versions provide easy mounting options for versatile usage. The Small Louver II is an excellent option for headliners, dash panels, and A or B pillars.

Material and Color

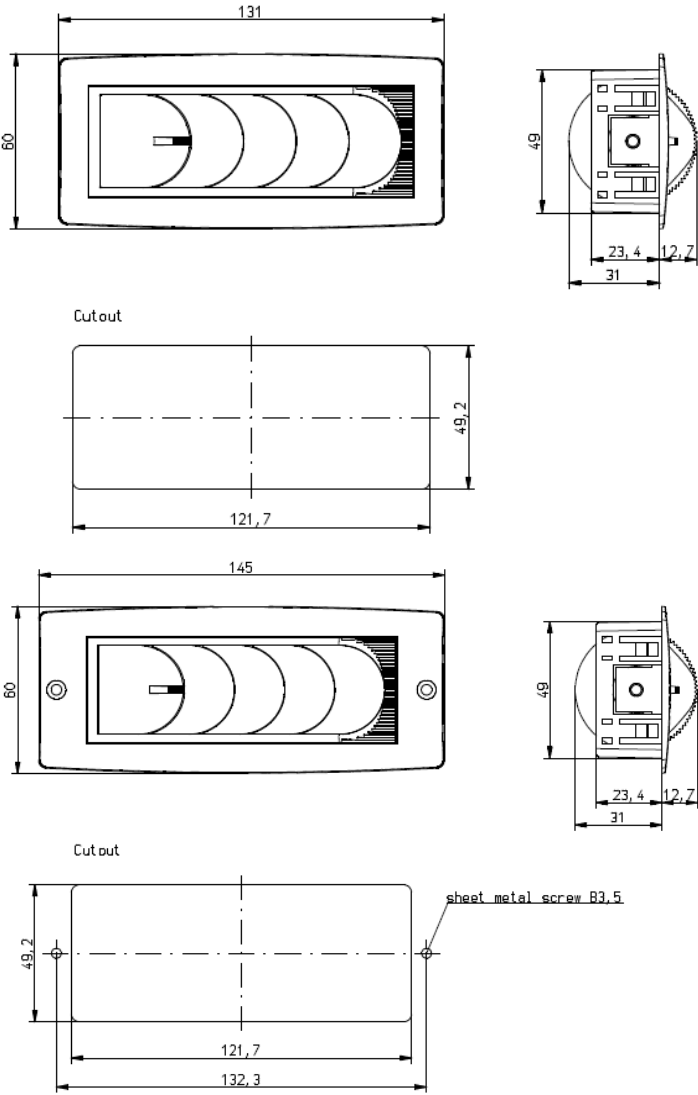
Polyamide PA6 35% glass reinforced
Standard Color: black, similar to RAL 9005

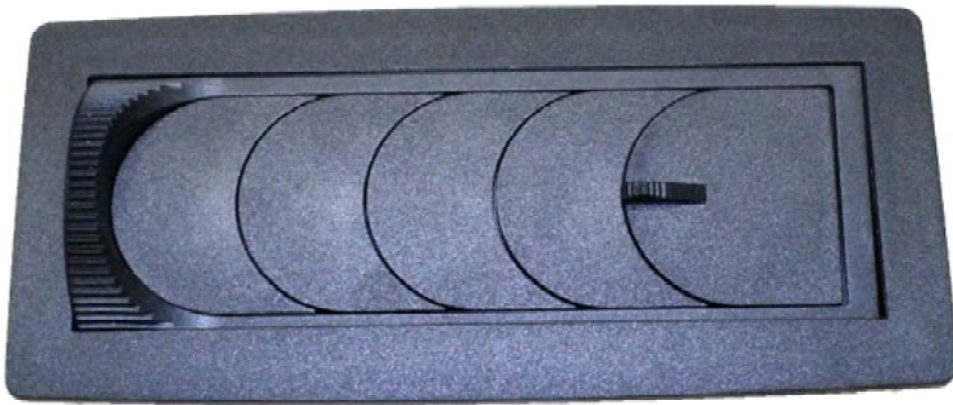
Technical Information

912-100-0912

Variations

Part Number	Attachment
334-314-0020	Clip
334-314-0021	Screw



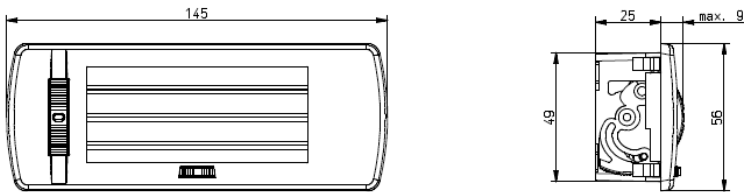


Rectangular Louvers Aero Louver

Aurora’s Aero Louver serves multiple functions for cabin air distribution. This louver caters to cab builders and designers who do not wish to have visible screws in their vehicles. Once the base of the louver is installed, a clip-on face plate hides the screws from view inside the cabin. The Aero louver also has dual wheels for adjusting airflow direction to ensure operator comfort. This louver is a great option for headliner and console applications, as well as under-seat personal air distribution.

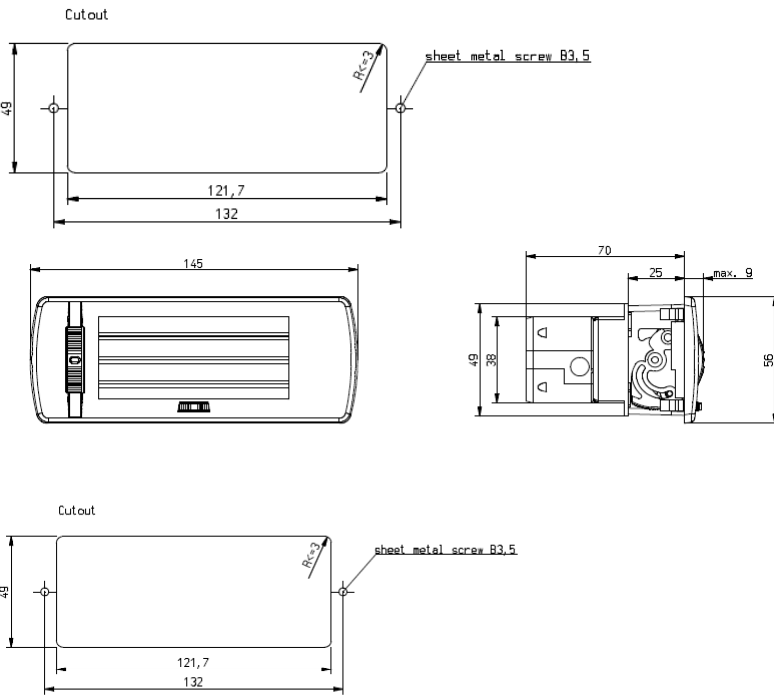
Material and Color

Polyamide PA6 35% glass fiber reinforced
Standard Color: black, similar to RAL 9005



Technical Information

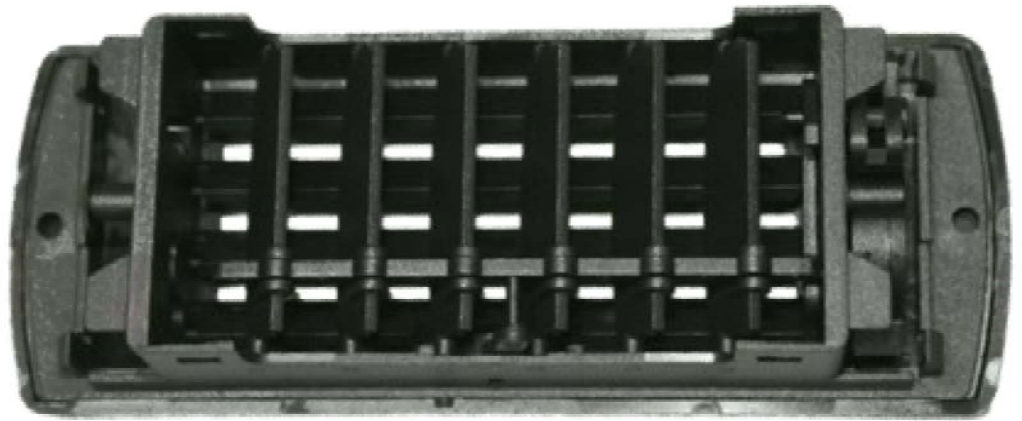
912-100-0404



Variations

Part Number	Attachment
334-314-0050	Screw
334-314-0052	Screw with Hose Adaptor





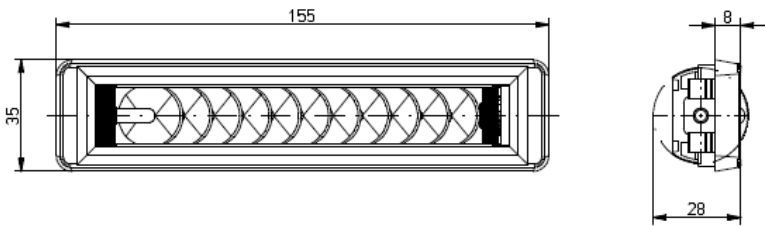
Rectangular Louvers Standard Roll Nozzle

Aurora’s Roll Nozzle offers a slim profile allowing this Louver to be located near the wind shield for defrost applications. The inner roll rotates enabling even more flexible air distribution. The roll can also be closed to block airflow through the louver.

Aurora’s Roll Nozzle has a slim profile allowing it to be located near the wind shield for defrost applications. The inner roll rotates allowing flexible air distribution. The roll can also be rotated to close off of the air through the louver. This particular roll nozzle has a wider frame to cover up unclean cut outs and frayed edges in the dash.

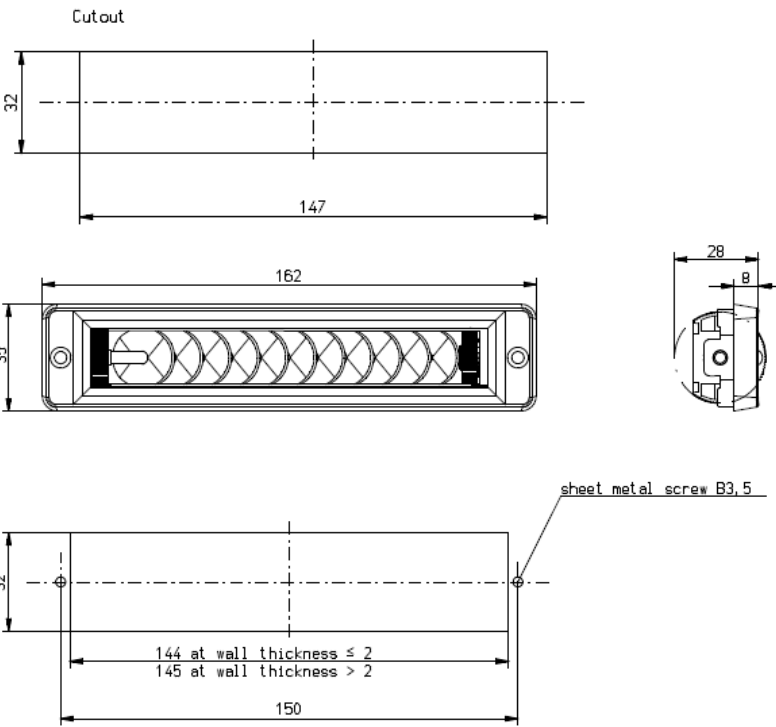
Material and Color

Polyamide PA6 35% glass fiber reinforced
Standard Color: black, similar to RAL 9005



Technical Information

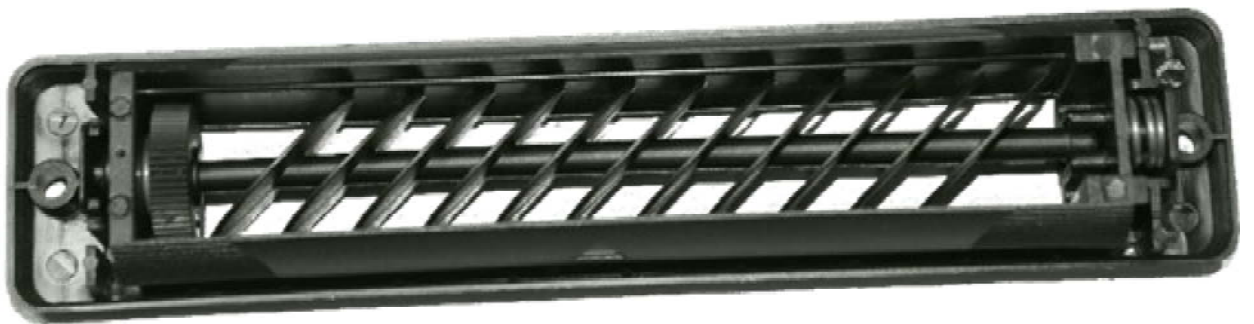
912-100-0177 Standard /
912-100-0142 Special Frame



Variations

Part Number	Attachment
334-341-0001	Clip
334-341-0002	Screw
334-341-0007	Screw; Special Frame





Rectangular Louvers Double Roll Nozzle

Aurora’s Roll Nozzle has a slim profile allowing it to be located near the windshield for defrost applications. The inner roll rotates allowing flexible air distribution. The roll can also be rotated to close of the air through the louver. The Double Roll Nozzle is an excellent option for dash panels.

Material and Color

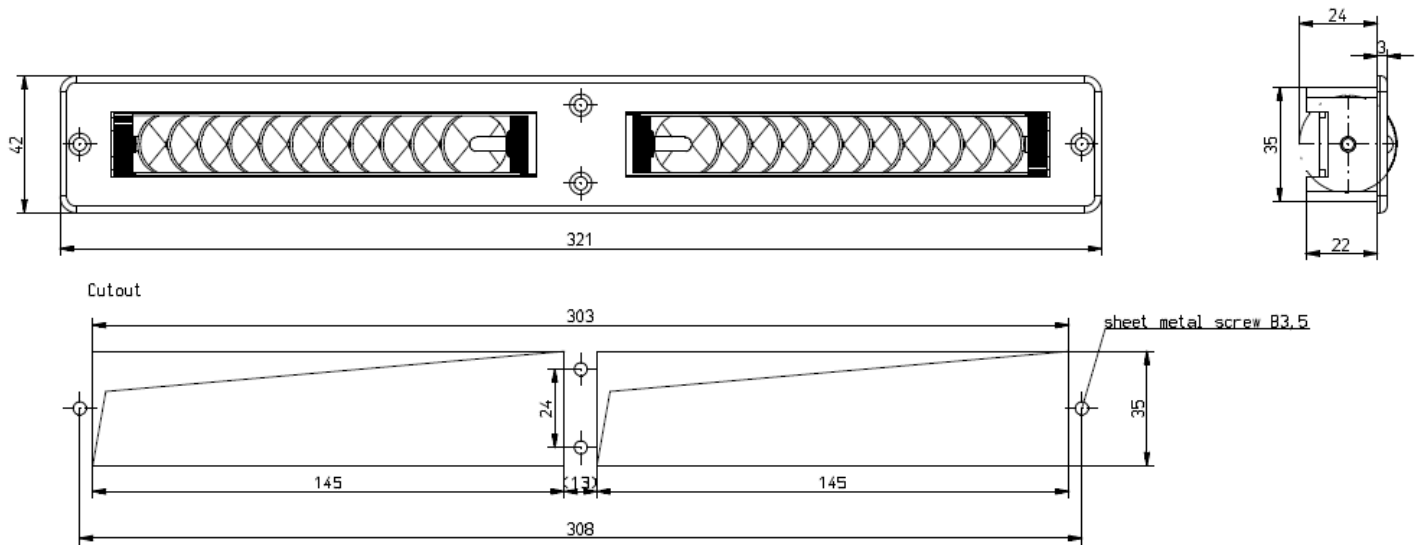
Polyamide PA6 35% glass fiber reinforced
Standard Color: black, similar to RAL 9005

Technical Information

912-100-0142

Variations	
Part Number	Attachment
334-341-0008	Screw – Double Roll





Defrost Louvers Quarter Circle Vent

Aurora’s Quarter Circle Vent has a fixed vane profile that evenly distributes airflow, making it ideal for defrost applications. This louver is most suitable for dashboard and window edge applications where defrost functionality is key.

Material and Color

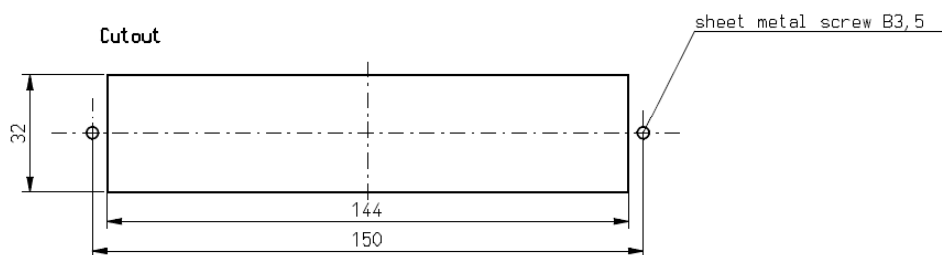
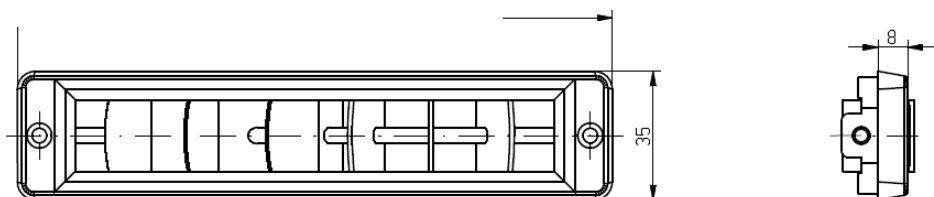
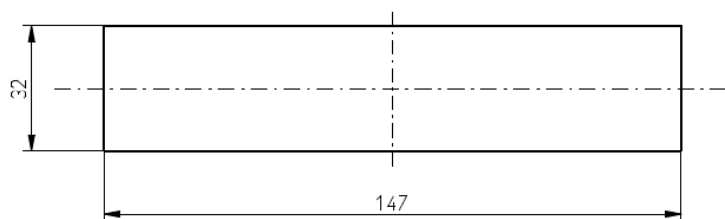
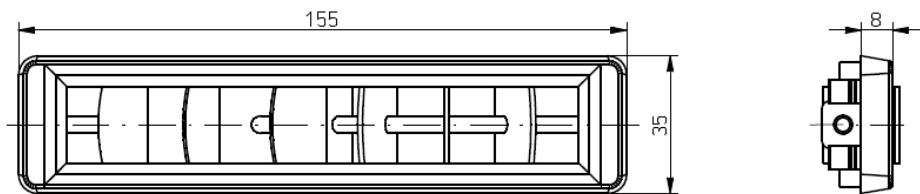
Polyamide PA6 35% glass fiber reinforced
Standard Color: black, similar to RAL 9005

Technical Information

912-100-0185

Variations	
Part Number	Attachment
334-150-0001	Clip
334-150-0002	Screw





Defrost Louvers PD Nozzle

The *PD Nozzle* is a defrost louver designed to be installed nearest the windshield. Resulting from a sleek profile design, *PD* makes an excellent addition to include in any dash board or headliner. Integrated guide vanes distribute optimal airflow along the surface. Various sizes are available upon request.

Material and Color

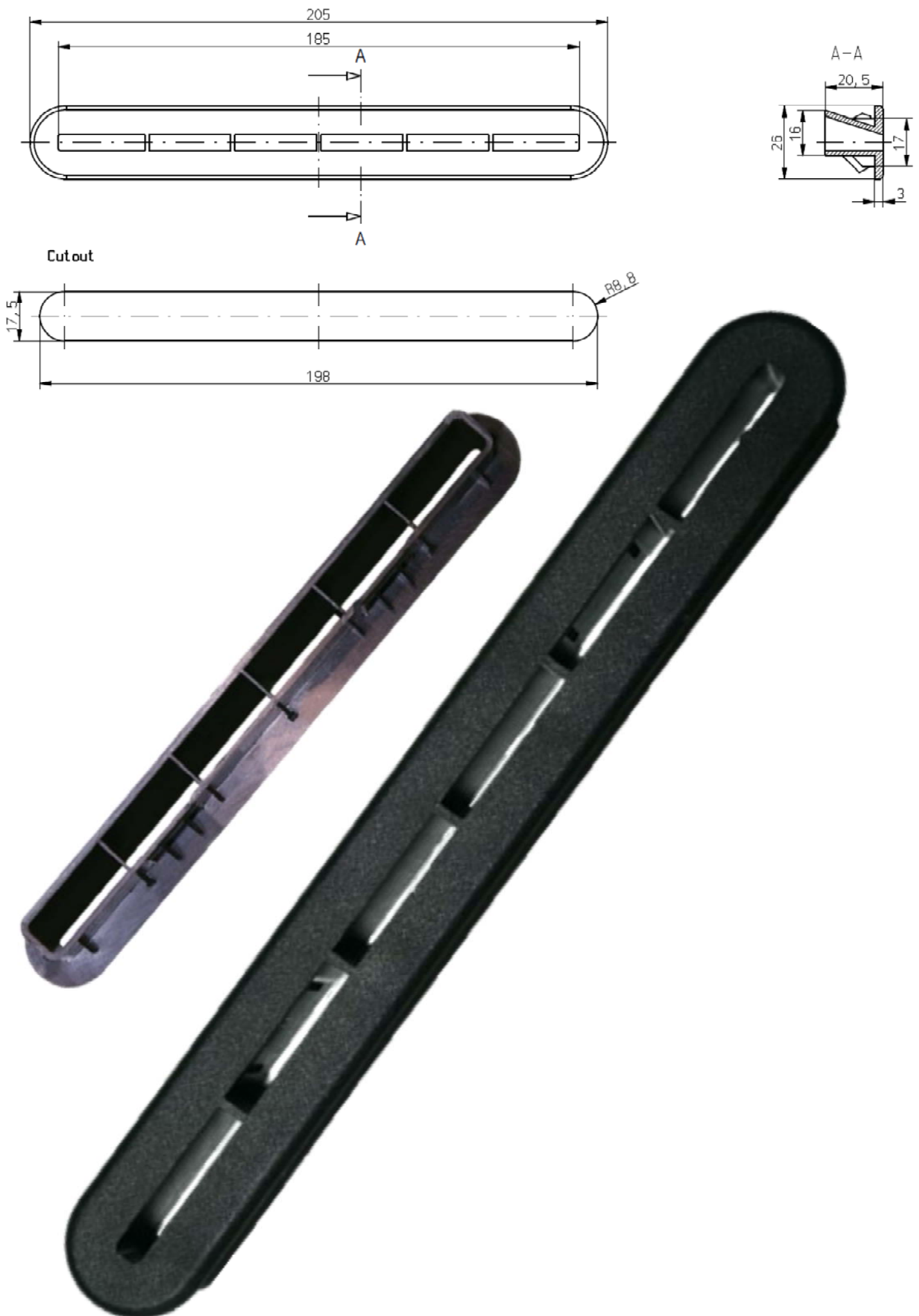
ABS Plastic
Standard Color: black, similar to RAL 9005

Technical Information

912-100-0323

Variations	
Part Number	Description
334-150-0003	PD Long Louver





Defrost Louvers PD2 Louver Long

The *PD Nozzle* is a defrost louver designed to be installed close to the windshield. As a result of its slim profile, it is an excellent product to be incorporated into a dash board or headliner. Integrated guide vanes distribute optimal airflow along the surface. Various sizes are available upon request.

Material and Color

ABS Plastic
Standard Color: black, similar to RAL 9005

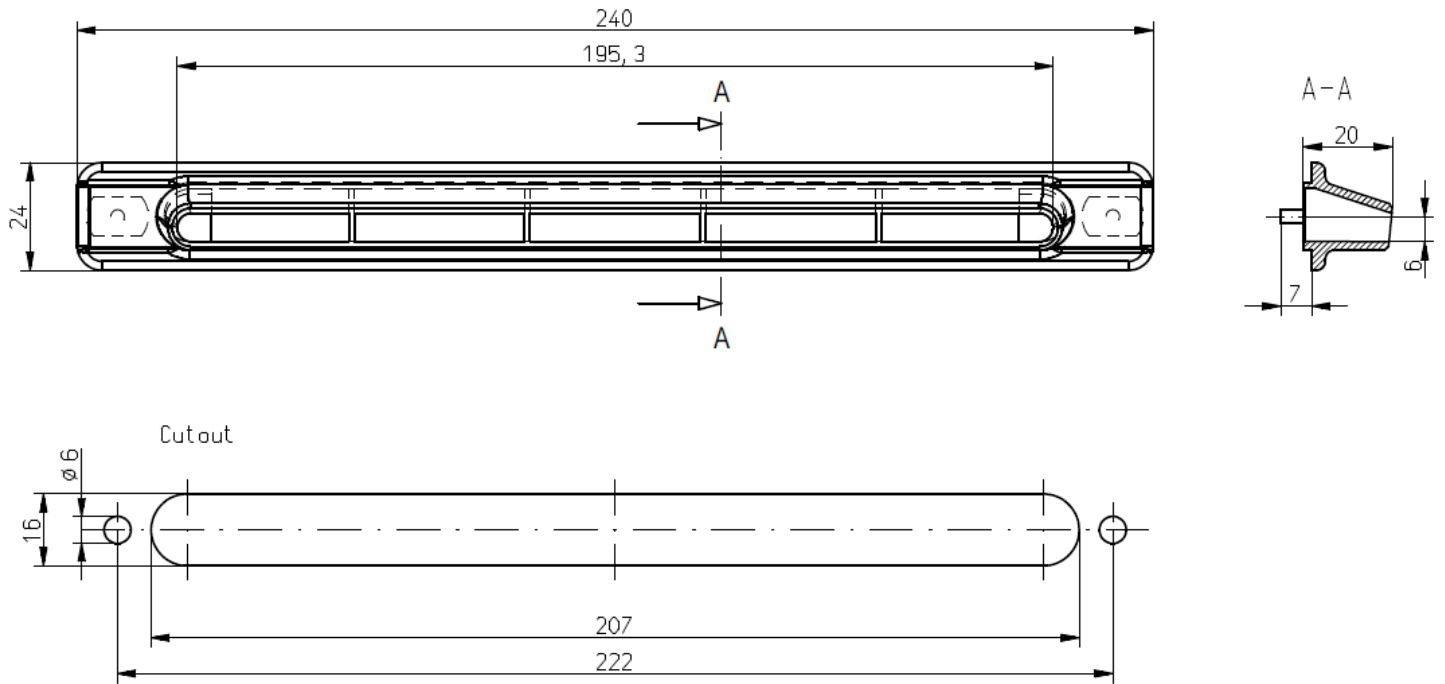
Technical Information

912-100-0323

Variations

Part Number	Description
334-150-0005	PD2 Long Louver





Defrost Louvers PD Short

The *PD Short* is a defrost louver designed to be installed close to the windshield. As a result of its slim profile, it is an excellent product to be incorporated into a dash board or headliner. Integrated guide vanes distribute optimal airflow along the surface. Various sizes are available upon request.

Material and Color

ABS Plastic
Standard Color: black, similar to RAL 9005

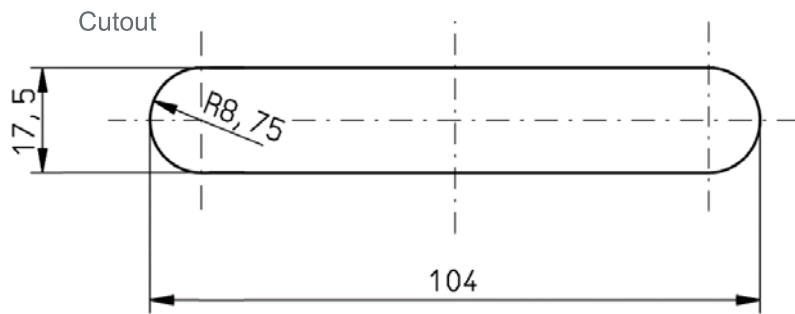
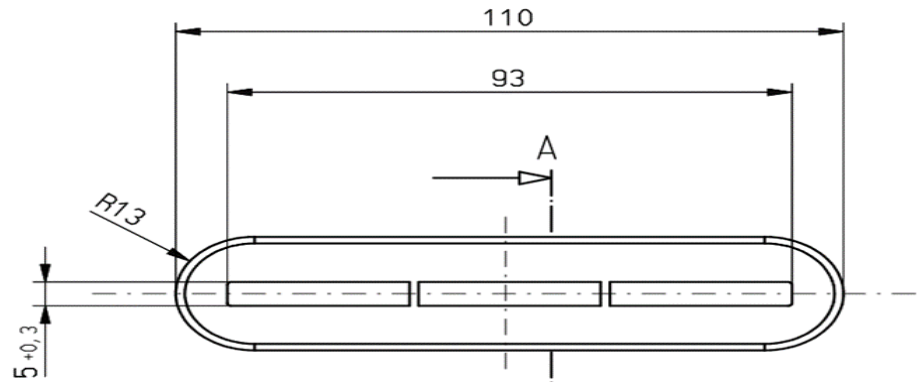
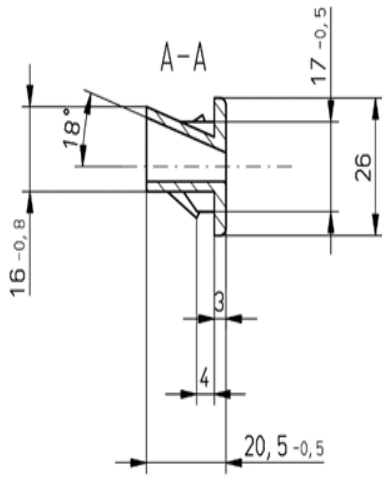
Technical Information

912-100-0323

Variations	
Part Number	Description
334-150-0004	PD Short Louver



Printed dimensions closely mimic actual piece size.



Defrost Louvers *Domino*

The *Domino* Louver's compact dimensions allow for ideal defrost applications. Their sleek design allows these louvers to adapt to the curve and width of any surface with minimal space requirements. *Domino* louvers are optimal for bus and coach applications, as they can be stacked and chained in a tongue and groove system in order to distribute airflow over a larger surface area. *Domino* is available in both clip and screw versions with clip ranges between 2mm and 5mm.

Material and Color

Polyamide PA6 15% glass fiber reinforced
Standard Color: black, similar to RAL 9005

Technical Information

912-100-0186

Variations

Please reference Drawings on page 129



