

55/94

BOTOLA

ROOF HATCH



CARATTERISTICHE STANDARD

- Applicazione: Passo d'uomo e Aerazione;
- Dispositivi di apertura: 1 manuale sganciabile in acciaio e tecnopolimeri stampati + cerniere esterne per apertura a 180°;
- Dimensioni d'ingombro telaio personalizzabili (min. 510x650 mm);
- Coperchio standard: vetro (Omologato ECE-R 43) con profilo in alluminio;
- Telaio di fissaggio in alluminio anodizzato.

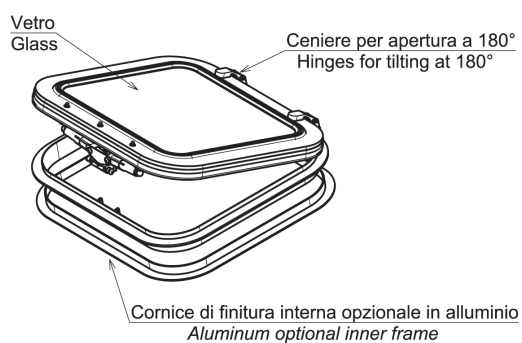
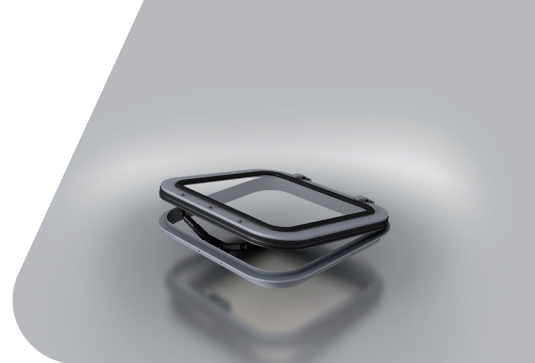
STANDARD FEATURES

- Application: Crawl space and Ventilation;
- Opening device: 1 manual arms steel and injected techno-polymers + external hinges for dome tilting at 180°;
- Roof-aperture for assembly frame on demand (minimum 510x650 mm);
- Standard dome in glass (Homologated ECE-R 43) with aluminum outline;
- Assembly frame in anodized aluminum.

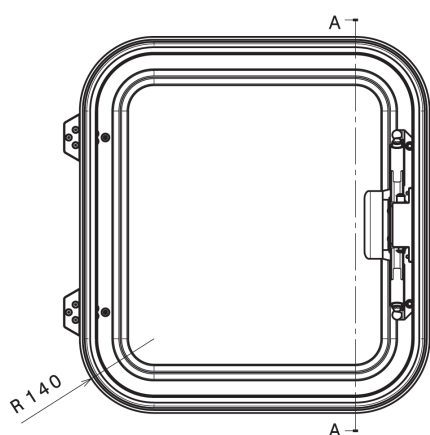
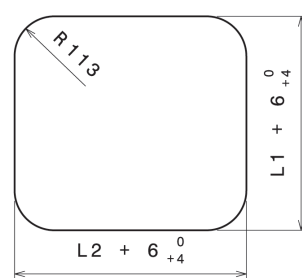




SCARICA LA SCHEDA TECNICA
DATASHEET DOWNLOAD



DIMENSIONI SEDE PER BOTOLA
Size for hatch housing

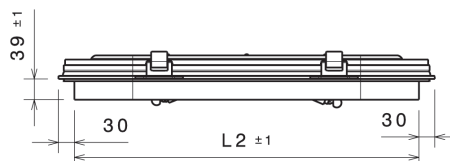
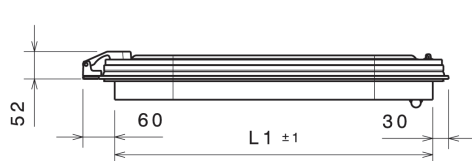


A-A



Azionamento manuale sganciabile
Releasable manual device

$L1 \geq 510$
$L2 \geq 650$



LAM S.p.A.
Via Guido Rossa, 4 - 41057 Spilamberto (MO) - Italy
Tel. +39 059 784392 - Fax +39 059 8638048
www.lamspa.it

ISO 9001:2015
IATF 16949:2016

