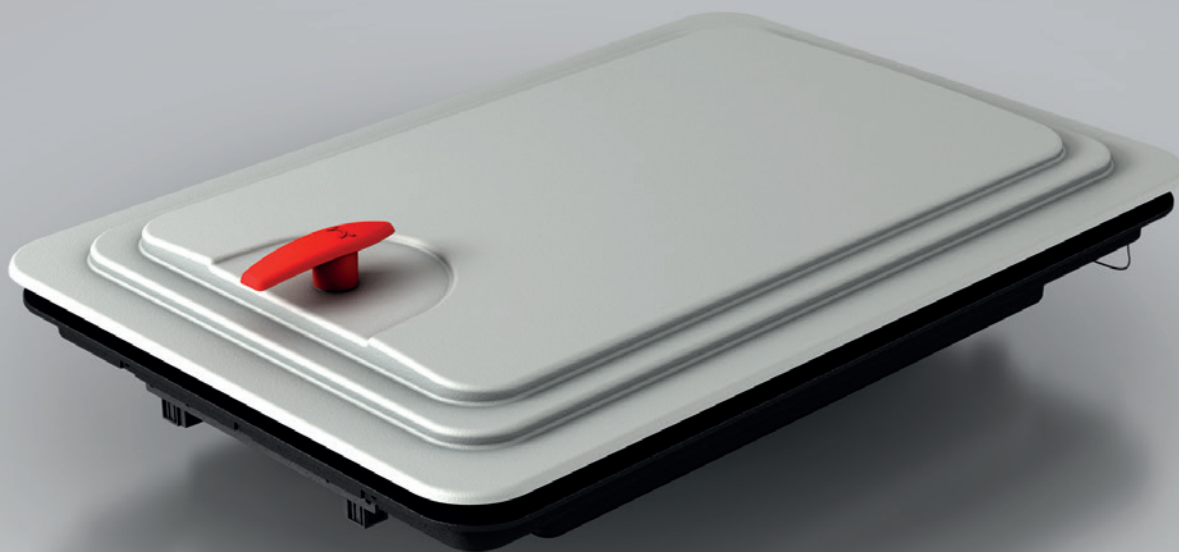


hyper19 H | MA

BOTOLA

ROOF HATCH



CARATTERISTICHE STANDARD

- Applicazione: Aerazione + Emergenza;
- Dispositivi di apertura: 2 azionamenti manuali su torretta;
- Dimensioni d'ingombro telaio 970x630 mm;
- Coperchio in ABS UV Resistant;
- Telaio di fissaggio in materiale plastico PA;
- Omologazione R118;
- Rispetta la direttiva per uscita di emergenza R107.

STANDARD FEATURES

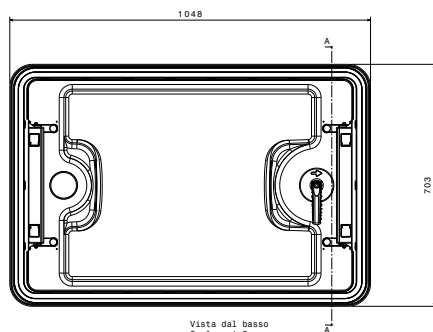
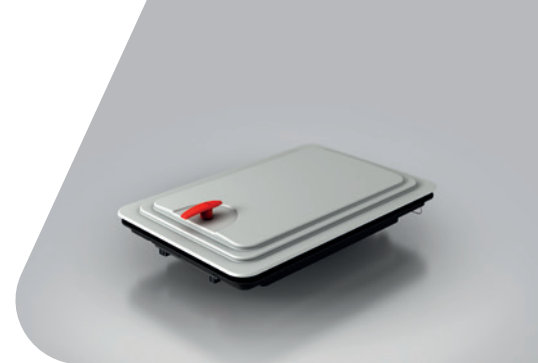
- Application: Ventilation + Emergency Exit;
- Opening device: 2 manual ventilation arms;
- Roof aperture 970x630 mm;
- Dome in thermoformed PA ABS UV Resistant;
- Assembly frame in plastic materials;
- Homologated according to R118;
- Complying with the directive R107 for Emergency Exit.



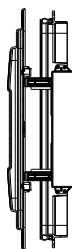


SCARICA LA SCHEDA TECNICA
DATASHEET DOWNLOAD

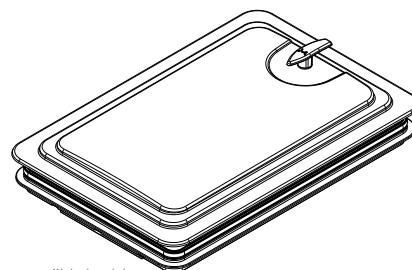
hypering MA



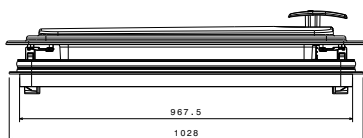
Vista dal basso
Scala: 1:5



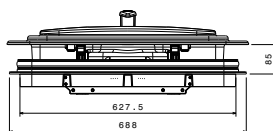
Vista in sezione A-A
Scala: 1:5



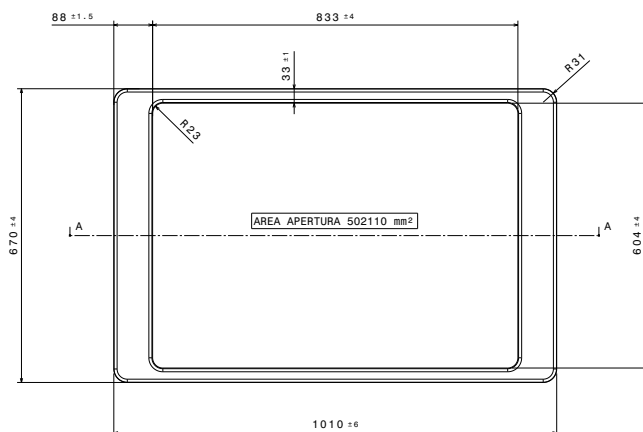
Vista isometrica
Scala: 1:5



Vista frontale
Scala: 1:5



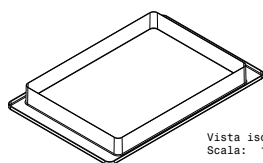
Vista da sinistra
Scala: 1:5



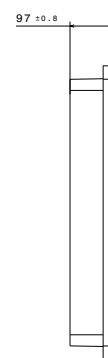
Vista frontale
Scala: 1:5



Vista in sezione A-A
Scala: 1:5



Vista isometrica
Scala: 1:10



Vista da sinistra
Scala: 1:5

Cornice interna
Interior frame



LAM S.p.A.
Via Guido Rossa, 4 - 41057 Spilamberto (MO) - Italy
Tel. +39 059 784392 - Fax +39 059 8638048
www.lamspa.it

ISO 9001:2015
IATF 16949:2016

