

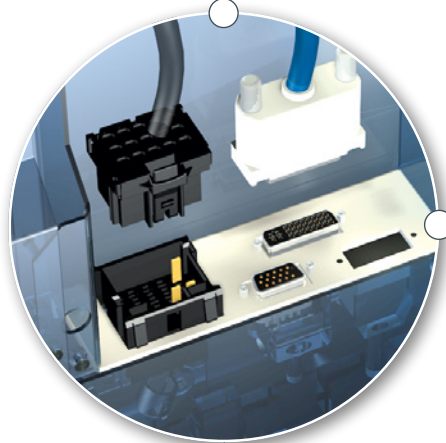
# INFOTAINMENT SCREEN



LAWO's comprehensive series of infotainment screens is designed to provide a reliable, high-quality and up-to-date solution for every customer.

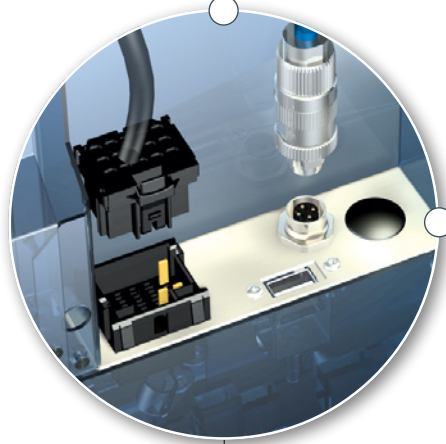
## LAWO'S STATE-OF-THE-ART INFOTAINMENT SOLUTIONS

are perfect to provide passengers with travel and other information. Videos, photos, animations and text are part of the content that can be combined with route and connection information, either on the same screen or next to one another in case of side-by-side screens. Various display sizes and three distinct product lines ensure that customer's demands are met even in case of different technical requirements or confined space. Wireless technology like LTE (4G)/UMTS (3G) or WiFi and control of slave screens are possible for all product lines with LAWO's ProSys Box-PC.



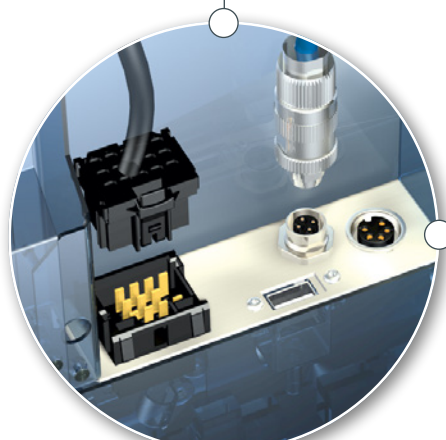
### SLAVE

- Can be controlled by any on-board computer (OBC) with graphical output
- DVI
- VGA
- MCP: Power



### IP/ETHERNET

- Standalone unit with CPU
- Controlled over IP/Ethernet (M12)
- USB for manual update
- MCP: Power



### COMPACT

- Standalone unit with CPU
- Controlled over IP/Ethernet (M12) or IBIS
- USB for manual update
- MCP: Power, IBIS Slave, Stop and Door Signal
- Audio Line-Out

## AVAILABLE SCREEN TYPES

### 18.5"

- Format 16:9
- Resolution 1.366 x 768 (WXGA)
- Low mechanical height
- Wide angle technology (viewing angle 178°/178°)



### 21.5"

- Format 16:9
- Resolution 1.920 x 1.080 (Full-HD)
- Wide angle technology (viewing angle 178°/178°)



### 2 x 18.5"

- Format 2 x 16:9
- Resolution 2 x 1.366 x 768 (WXGA)
- Side by side displays
- Low mechanical height
- Wide angle technology (viewing angle 178°/178°)
- Route information and advertisements can be displayed simultaneously



### 29"

- Format 16:5
- Resolution 1.920 x 610 (Full-HD xn)
- Very low mechanical height
- Wide angle technology (viewing angle 178°/178°)
- Route information and advertisements can be displayed simultaneously
- Screen can be split in customised ratio



## TECHNICAL DATA

Display size	18.5"	21.5"	2 x 18.5"	29"
Format	16:9	16:9	2 x 16:9	16:5
Resolution	1.366 x 768 (WXGA)	1.920 x 1.080 (Full-HD)	2 x 1.366 x 768 (WXGA)	1.920 x 610 (Full-HD xn)
Brightness	ca. 300 cd/m²			ca. 400 cd/m²
Contrast	3.000 : 1	5.000 : 1	3.000 : 1	
Colours	16.7 million, 24 Bit			
Viewing angle	H:178°, V:178° ultra-wide viewing			
Housing	anodised aluminium			
Weight	approx. 6.5 kg	approx. 8 kg	approx. 12 kg	approx. 9.5 kg
Operating voltage	24 V-DC (16.8 V – 32 V)			
Operating temperature	0 °C to +50 °C (Depending on design and vehicle integration)			
Interfaces	See product lines			
Editing software	InfoTED®			
Operating system	Linux			
Standards and directives	ECE-R10 (EMC-Bus) ECE-R118 (Flammability)			