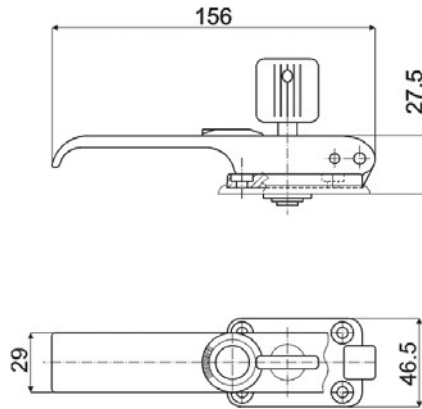


# P.216



## Caratteristiche - Features



PA6 + FV anti-UV



Da utilizzare in abbinamento con le serrandole P.214 - cat. 15B -  
To be used together with locking gear P.214 - cat. 15B



Nero - Black



20 pezzi - pieces



7 dm<sup>3</sup>



2.800 g



18 (pag. 29)



Sezione tecnica - Technical section  
pag. 30 - 42 - 43(A18)

## Versioni disponibili / Available versions

P.216	m			
2	Cod.	◀	✕	▶
A1 - 137	60768	•		
A2 - 146	66967	•	500	
A3 - 150	60688	•	500	
A4 - 124	60698	•	500	
A5 - 501	60708	•	500	
A6 - 502	60718	•	500	
A7 - 250	60728	•	500	
A8 - 262	60738	•	500	
A9 - 269	60748	•	500	
A10 - 278	60758	•	500	

P.216	m			
2	Cod.	◀	✕	▶
A11 - 156	63821	•	500	
A12 - 142	63831	•	500	
A13 - 503	63841	•	500	
A14 - 504	63851	•	500	
A15 - 505	63861	•	500	
A16 - 506	63871	•	500	
A17 - 507	63881	•	500	
A18 - 508	63891	•	500	
A19 - 509	63901	•	500	
A20 - 516	63511	•	500	

P.216	m			
2	Cod.	◀	✕	▶
A21 - 511	63911	•	500	
A22 - 512	63491	•	500	
A23 - 513	60811	•	500	
A24 - 514	63921	•	500	
A25 - 515	62281	•	500	
A26 - 516	63041	•	500	
A27 - 517	63931	•	500	
A28 - 518	63941	•	500	
A29 - 519	63951	•	500	
A30 - 520	63331	•	500	

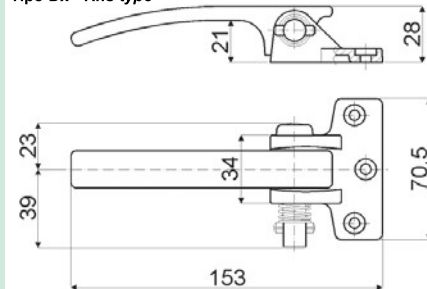
P.216	m			
✕	Cod.	◀	✕	▶
	67737	•		

A31/A40				
A44 - 149	63631	•	500	

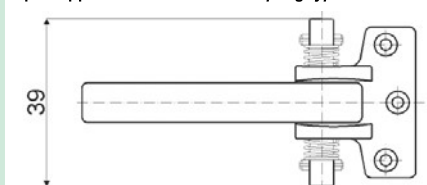
# P.217



Tipo Dx - Rhs type



Tipo doppio innesto - Double coupling type



## Caratteristiche - Features



PA6 + FV, componenti metallic in acciaio zincato -  
PA6 + FV, zinc-plated steel metallic components



Da utilizzare in abbinamento con serrandole P.214 e aste P.219 - cat. 15B -  
To be used together with locking gear P.214 and rods P.219 - cat. 15B



Nero - Black



20 pezzi - pieces



7 dm<sup>3</sup>



2.000 g



-

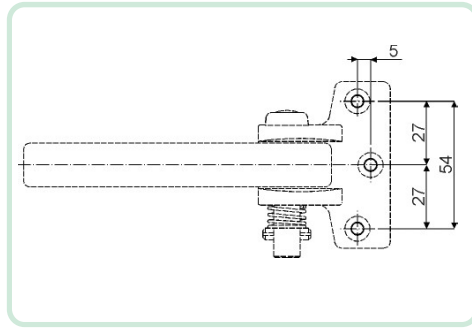


Sezione tecnica - Technical section  
pag. 30 - 42 - 43(A18)

## Versioni disponibili / Available versions

P.217	m				
	Cod.	Tipo - Type	◀	✕	▶
	67067	Dx - Rhs	•		
	67697	Sx - Lhs	•		
	64418	Doppio innesto - Double coupling	•		

**P.217**

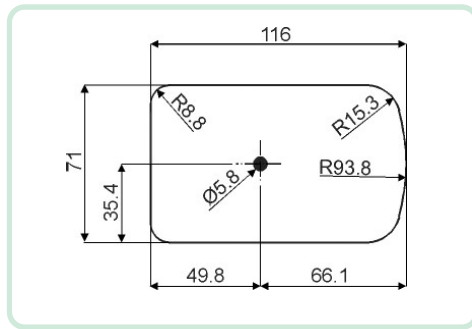


Dima di foratura e di fissaggio  
*Drilling and fixing template*



Temperatura di esercizio -10/+120 °C  
*Working temperature*

**P.246bis**

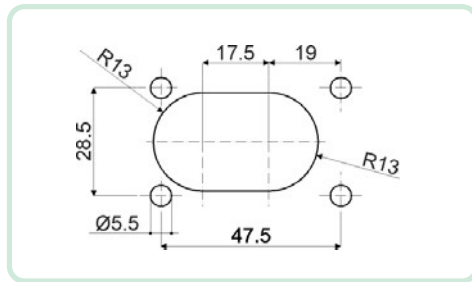


Dima di foratura e di fissaggio  
*Drilling and fixing template*



Temperatura di esercizio +10/+70 °C  
*Working temperature*

**P.216**

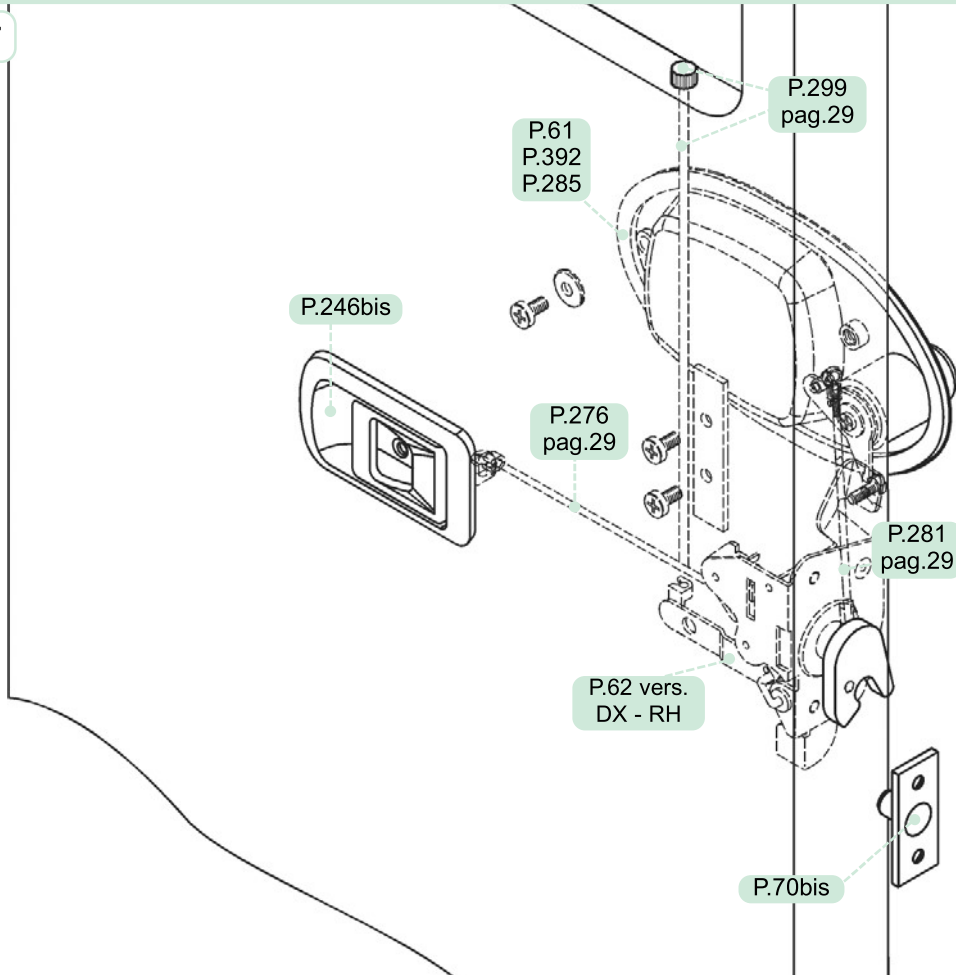


Dima di foratura e di fissaggio  
*Drilling and fixing template*



Temperatura di esercizio -10/+120 °C  
*Working temperature*

A17



A18

