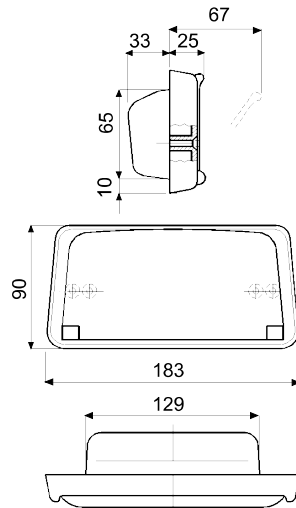












# P.108



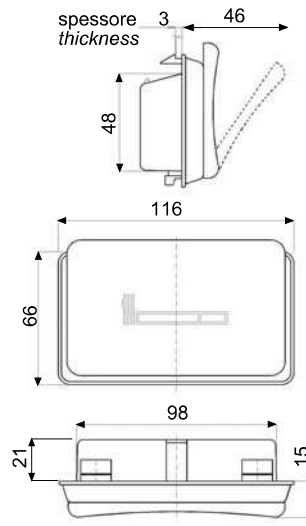
### Caratteristiche - Features

-  ABS + Policarbonato (auto estinguente)  
ABS + Polycarbonate (self extinguishing)
-  Nero / Black
-  70 pezzi - pieces
-  64 dm<sup>3</sup>
-  12.500 g
-  5 pag. F16
-  Sezione tecnica - Technical section  
pag.F18 - F21








### Versioni disponibili / Available versions

| P.108 | posacenere - ash-tray |  |   |   |  |
|-------|-----------------------|--|---|---|--|
|       | Cod.                  |  |  |  |  |
|       | 64520                 |  | .   |   |  |




# P.19



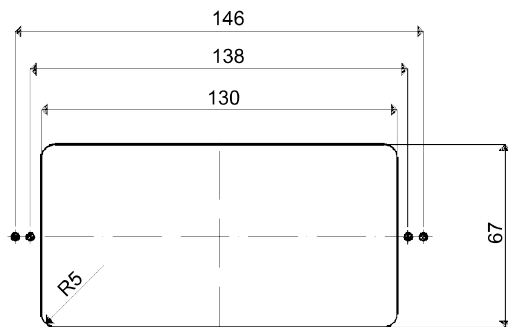
### Caratteristiche - Features

-  Poliammide  
Polyamide
-  Nero / Black
-  50 pezzi - pieces
-  24,3 dm<sup>3</sup>
-  5.450 g
-  -
-  Sezione tecnica - Technical section  
pag.F18 - F21

### Versioni disponibili / Available versions

| P.19 | posacenere - ash-tray |  |   |   |  |
|------|-----------------------|--|---|---|--|
|      | Cod.                  |  |  |  |  |
|      | 67627                 |  | .   |   |  |

P108



Dima di foratura - Drilling template



Dima di foratura  
Drilling template



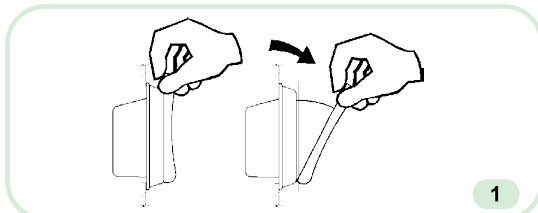
Fissaggio - Fixing  
viti autofilettanti Ø 4 mm a testa svasata (non comprese nella confezione) fori di fissaggio da dimensionarsi a seconda del materiale del supporto.

Ø 4 mm countersunk head autothreading screws (not included in the package), fixing holes to be dimensioned according to the material of the support.



1 Per aprire lo sportellino, tirare come in figura  
2 per svuotare il posacenere agire sulla molla poi tirare lo sportello verso il basso.

1 to open the door, pull as shown in the illustration  
2 to empty the ashtray, press down the spring and pull the door downwards

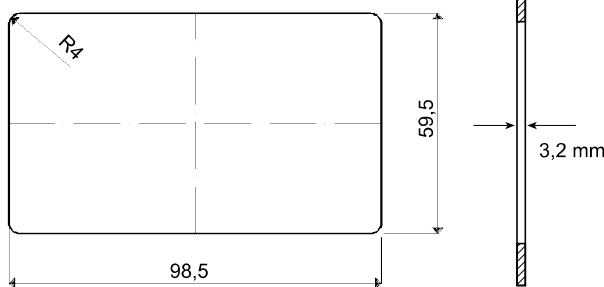


Caratteristiche - Features



Temperatura di esercizio: -10/120°C  
Working temperature: -10/120°C

P19



Dima di foratura  
Drilling template



Fissaggio - Fixing  
A scatto nella dima predisposta per l'inserimento.  
On release into the presetted template

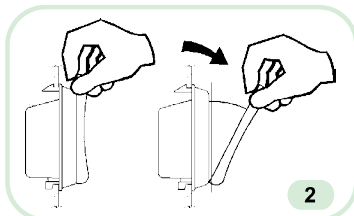
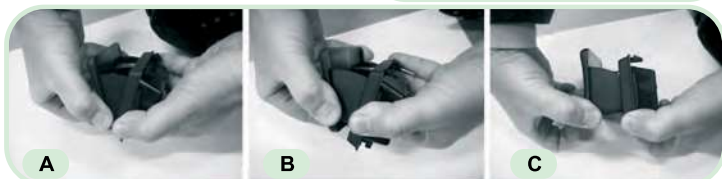


Per svuotare il posacenere:  
A afferrare nel modo indicato in figura facendo leva sulle due parti,  
B sganciare il meccanismo di funzionamento  
C separare il portellino dal corpo

2 per aprire lo sportellino tirare come in figura verso il basso

To empty the ashtray:  
A Take and hold as indicated in the picture pushing down on both side,  
B Disjoint the connections  
C Separate the cover from the body

2 to open the cover, pull downwards as shown in the picture



Caratteristiche - Features



Temperatura di esercizio: -10/120°C  
Working temperature: -10/120°C